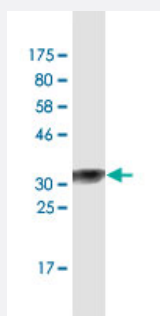


HES1 monoclonal antibody (M05A), clone 3C7

Catalog # H00003280-M05A

Size 200 uL

Applications



Western Blot detection against Immunogen (34.54 KDa) .

Specification

Product Description	Mouse monoclonal antibody raised against a partial recombinant HES1.
Immunogen	HES1 (NP_005515.1, 201 a.a. ~ 280 a.a) partial recombinant protein with GST tag. MW of the GST tag alone is 26 KDa.
Sequence	APCKLGSQAGEAAKVFGGFQVVPAPDGQFAFLIPNGAFAHSGPVIIPVYTSNSGTSVGPNAVSPSSGPSLTADSMWRPWRN
Host	Mouse
Reactivity	Human
Isotype	IgG2a Kappa
Quality Control Testing	Antibody Reactive Against Recombinant Protein. Western Blot detection against Immunogen (34.54 KDa) .
Storage Buffer	In ascites fluid
Storage Instruction	Store at -20°C or lower. Aliquot to avoid repeated freezing and thawing.

Applications

- Western Blot (Recombinant protein)

[Protocol Download](#)

- ELISA

Gene Info — HES1

Entrez GeneID	3280
GeneBank Accession#	NM_005524
Protein Accession#	NP_005515.1
Gene Name	HES1
Gene Alias	FLJ20408, HES-1, HHL, HRY, bHLHb39
Gene Description	hairy and enhancer of split 1, (Drosophila)
Omim ID	139605
Gene Ontology	Hyperlink
Gene Summary	This protein belongs to the basic helix-loop-helix family of transcription factors. It is a transcriptional repressor of genes that require a bHLH protein for their transcription. The protein has a particular type of basic domain that contains a helix interrupting protein that binds to the N-box rather than the canonical E-box. [provided by RefSeq]
Other Designations	hairy and enhancer of split 1 hairy homolog transcription factor HES-1

Pathway

- [Maturity onset diabetes of the young](#)
- [Notch signaling pathway](#)

Disease

- [Attention Deficit Disorder with Hyperactivity](#)
- [Autistic Disorder](#)
- [Genetic Predisposition to Disease](#)

- [NARP](#)