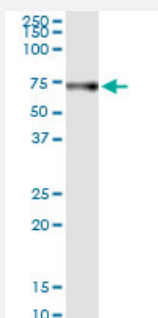


# HRG (Human) IP-WB Antibody Pair

Catalog # H00003273-PW1

Size 1 Set

## Applications



Immunoprecipitation of HRG transfected lysate using rabbit polyclonal anti-HRG and Protein A Magnetic Bead ([U0007](#)), and immunoblotted with mouse purified polyclonal anti-HRG.

## Specification

<b>Product Description</b>	This IP-WB antibody pair set comes with one antibody for immunoprecipitation and another to detect the precipitated protein in western blot.
<b>Reactivity</b>	Human
<b>Quality Control Testing</b>	Immunoprecipitation-Western Blot (IP-WB) Immunoprecipitation of HRG transfected lysate using rabbit polyclonal anti-HRG and Protein A Magnetic Bead ( <a href="#">U0007</a> ), and immunoblotted with mouse purified polyclonal anti-HRG.
<b>Supplied Product</b>	Antibody pair set content: 1. Antibody pair for IP: rabbit polyclonal anti-HRG (300 ul) 2. Antibody pair for WB: mouse purified polyclonal anti-HRG (50 ug)
<b>Storage Instruction</b>	Store reagents of the antibody pair set at -20°C or lower. Please aliquot to avoid repeated freeze thaw cycle. Reagents should be returned to -20°C storage immediately after use.

## Applications

- Immunoprecipitation-Western Blot

[Protocol Download](#)

## Gene Info — HRG

Entrez GeneID	<a href="#">3273</a>
Gene Name	HRG
Gene Alias	DKFZp779H1622, HPRG, HRGP
Gene Description	histidine-rich glycoprotein
Omim ID	<a href="#">142640</a>
Gene Ontology	<a href="#">Hyperlink</a>
Gene Summary	<p>This histidine-rich glycoprotein contains two cystatin-like domains and is located in plasma and platelets. The physiological function has not been determined but it is known that the protein binds heme, dyes and divalent metal ions. It can inhibit rosette formation and interacts with heparin, thrombospondin and plasminogen. Two of the protein's effects, the inhibition of fibrinolysis and the reduction of inhibition of coagulation, indicate a potential prothrombotic effect. Mutations in this gene lead to thrombophilia due to abnormal histidine-rich glycoprotein levels. [provided by RefSeq]</p>
Other Designations	histidine-proline rich glycoprotein thrombophilia due to elevated HRG

## Disease

- [Blood Coagulation Disorders](#)
- [Cardiovascular Diseases](#)
- [Diabetes Mellitus](#)
- [Edema](#)
- [Thrombosis](#)