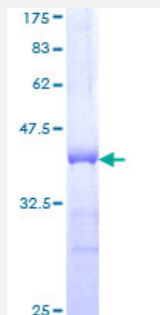


# HOXC12 (Human) Recombinant Protein (Q01)

Catalog # H00003228-Q01

Size 25 ug, 10 ug

## Applications



## Specification

<b>Product Description</b>	Human HOXC12 partial ORF ( NP_776272, 1 a.a. - 100 a.a.) recombinant protein with GST-tag at N-terminal.
<b>Sequence</b>	MGEHNLLNPGFVGPLVNIHTGDTFYFPNFRASGAQLPGLPSLSYPRRDNVCSLSWPSAEP CNGY PQPYLGSPVSLNPPFGRTCELARVEDGKGYREPCA
<b>Host</b>	Wheat Germ (in vitro)
<b>Theoretical MW (kDa)</b>	36.74
<b>Interspecies Antigen Sequence</b>	Mouse (98); Rat (98)
<b>Preparation Method</b>	<a href="#">in vitro wheat germ expression system</a>
<b>Purification</b>	Glutathione Sepharose 4 Fast Flow
<b>Quality Control Testing</b>	12.5% SDS-PAGE Stained with Coomassie Blue.
<b>Storage Buffer</b>	50 mM Tris-HCl, 10 mM reduced Glutathione, pH=8.0 in the elution buffer.
<b>Storage Instruction</b>	Store at -80°C. Aliquot to avoid repeated freezing and thawing.
<b>Note</b>	Best use within three months from the date of receipt of this protein.

## Applications

- Enzyme-linked Immunoabsorbent Assay
- Western Blot (Recombinant protein)
- Antibody Production
- Protein Array

## Gene Info — HOXC12

Entrez GeneID [3228](#)

GeneBank Accession# [NM\\_173860](#)

Protein Accession# [NP\\_776272](#)

Gene Name HOXC12

Gene Alias HOC3F, HOX3, HOX3F

Gene Description homeobox C12

Omim ID [142975](#)

Gene Ontology [Hyperlink](#)

**Gene Summary** This gene belongs to the homeobox family of genes. The homeobox genes encode a highly conserved family of transcription factors that play an important role in morphogenesis in all multicellular organisms. Mammals possess four similar homeobox gene clusters, HOXA, HOXB, HOXC and HOXD, which are located on different chromosomes and consist of 9 to 11 genes arranged in tandem. This gene is one of several homeobox HOXC genes located in a cluster on chromosome 12. [provided by RefSeq]

**Other Designations** homeo box 3F|homeo box C12