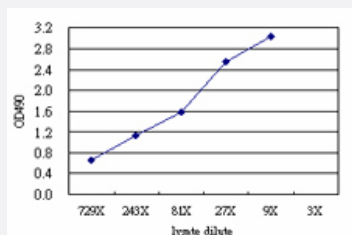


HOXC8 (Human) Matched Antibody Pair

Catalog # H00003224-AP51

Size 1 Set

Applications



Sandwich ELISA detection sensitivity ranging from approximately 729x to 3x dilution of the HOXC8 293T overexpression lysate (non-denatured).

Specification

Product Description	This antibody pair set comes with a matched antibody pair to detect and quantify the protein level of human HOXC8.
Reactivity	Human
Quality Control Testing	Standard curve using HOXC8 293T overexpression lysate (non-denatured) as an analyte. Sandwich ELISA detection sensitivity ranging from approximately 729x to 3x dilution of the HOXC8 293T overexpression lysate (non-denatured).
Supplied Product	Antibody pair set content: 1. Capture antibody: mouse monoclonal anti-HOXC8 (100 ug) 2. Detection antibody: rabbit purified polyclonal anti-HOXC8 (50 ug) *Reagents are sufficient for at least 3-5 x 96 well plates using recommended protocols.
Storage Instruction	Store reagents of the antibody pair set at -20°C or lower. Please aliquot to avoid repeated freeze thaw cycle. Reagents should be returned to -20°C storage immediately after use.

Applications

- ELISA Pair (Transfected lysate)

[Protocol Download](#)

Gene Info — HOXC8

Entrez GeneID	3224
Gene Name	HOXC8
Gene Alias	HOX3, HOX3A
Gene Description	homeobox C8
Omim ID	142970
Gene Ontology	Hyperlink
Gene Summary	<p>This gene belongs to the homeobox family of genes. The homeobox genes encode a highly conserved family of transcription factors that play an important role in morphogenesis in all multicellular organisms. Mammals possess four similar homeobox gene clusters, HOXA, HOXB, HOXC and HOXD, which are located on different chromosomes and consist of 9 to 11 genes arranged in tandem. This gene is one of several homeobox HOXC genes located in a cluster on chromosome 12. The product of this gene may play a role in the regulation of cartilage differentiation. It could also be involved in chondrodysplasias or other cartilage disorders. [provided by RefSeq]</p>
Other Designations	Hox-3.1, mouse, homolog of homeo box 3A homeo box C8 homeobox protein Hox-C8