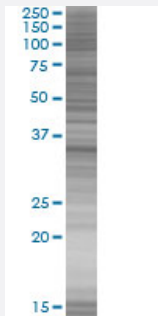


HOXC4 293T Cell Transient Overexpression Lysate(Denatured)

Catalog # H00003221-T01

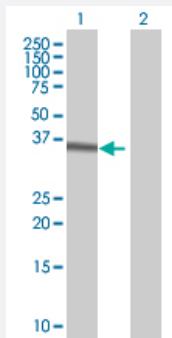
Size 100 uL

Applications



SDS-PAGE Gel

HOXC4 transfected lysate.



Western Blot

Lane 1: HOXC4 transfected lysate (29.8 KDa)

Lane 2: Non-transfected lysate.

Specification

Transfected Cell Line 293T

Plasmid pCMV-HOXC4 full-length

Host Human

Theoretical MW (kDa) 29.8

Quality Control Testing Transient overexpression cell lysate was tested with Anti-HOXC4 antibody ([H00003221-B01](#)) by Western Blots.
SDS-PAGE Gel
HOXC4 transfected lysate.
Western Blot
Lane 1: HOXC4 transfected lysate (29.8 KDa)
Lane 2: Non-transfected lysate.

Storage Buffer	1X Sample Buffer (50 mM Tris-HCl, 2% SDS, 10% glycerol, 300 mM 2-mercaptoethanol, 0.01% Bromophenol blue)
Storage Instruction	Store at -80°C. Aliquot to avoid repeated freezing and thawing.

Applications

- Western Blot

Gene Info — HOXC4

Entrez GeneID	3221
GeneBank Accession#	NM_014620.4
Protein Accession#	-
Gene Name	HOXC4
Gene Alias	HOX3, HOX3E, cp19
Gene Description	homeobox C4
Omim ID	142974
Gene Ontology	Hyperlink

Gene Summary	<p>This gene belongs to the homeobox family of genes. The homeobox genes encode a highly conserved family of transcription factors that play an important role in morphogenesis in all multicellular organisms. Mammals possess four similar homeobox gene clusters, HOXA, HOXB, HOXC and HOXD, which are located on different chromosomes and consist of 9 to 11 genes arranged in tandem. This gene, HOXC4, is one of several homeobox HOXC genes located in a cluster on chromosome 12. Three genes, HOXC5, HOXC4 and HOXC6, share a 5' non-coding exon. Transcripts may include the shared exon spliced to the gene-specific exons, or they may include only the gene-specific exons. Two alternatively spliced variants that encode the same protein have been described for HOXC4. Transcript variant one includes the shared exon, and transcript variant two includes only gene-specific exons. [provided by RefSeq]</p>
--------------	--

Other Designations	homeo box 3E homeo box C4
--------------------	---------------------------

Disease

- [Genetic Predisposition to Disease](#)

- [Heart Defects](#)