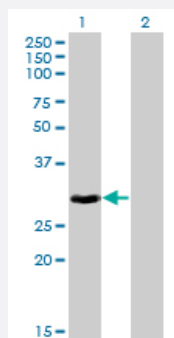


HOXB9 monoclonal antibody (M10), clone 2F8

Catalog # H00003219-M10

Size 100 ug

Applications

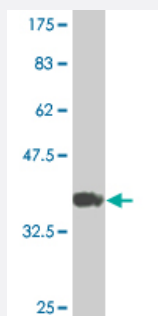


Western Blot (Transfected lysate)

Western Blot analysis of HOXB9 expression in transfected 293T cell line by HOXB9 monoclonal antibody (M10), clone 2F8.

Lane 1: HOXB9 transfected lysate(28.1 KDa).

Lane 2: Non-transfected lysate.



Western Blot detection against Immunogen (36.52 KDa) .

Specification

Product Description	Mouse monoclonal antibody raised against a partial recombinant HOXB9.
Immunogen	HOXB9 (NP_076922.1, 1 a.a. ~ 98 a.a) partial recombinant protein with GST tag. MW of the GST tag alone is 26 KDa.
Sequence	MSISGTLSSYYVDSIISHESEDAPPAKFPSGQYASSRQPGHAEHLEFPSCSFQPKAPVFGASWAP LSPHASGSLPSVYHPYIQPQGVPPAESRYLRTW
Host	Mouse
Reactivity	Human
Isotype	IgG2a Kappa

Quality Control Testing

Antibody Reactive Against Recombinant Protein.
Western Blot detection against Immunogen (36.52 KDa) .

Storage Buffer

In 1x PBS, pH 7.4

Storage Instruction

Store at -20°C or lower. Aliquot to avoid repeated freezing and thawing.

Applications

- Western Blot (Transfected lysate)

Western Blot analysis of HOXB9 expression in transfected 293T cell line by HOXB9 monoclonal antibody (M10), clone 2F8.

Lane 1: HOXB9 transfected lysate(28.1 KDa).

Lane 2: Non-transfected lysate.

[Protocol Download](#)

- Western Blot (Recombinant protein)

[Protocol Download](#)

- ELISA

Gene Info — HOXB9

Entrez GeneID

[3219](#)

GeneBank Accession#

[NM_024017](#)

Protein Accession#

[NP_076922.1](#)

Gene Name

HOXB9

Gene Alias

HOX-2.5, HOX2, HOX2E

Gene Description

homeobox B9

Omim ID

[142964](#)

Gene Ontology

[Hyperlink](#)

Gene Summary

This gene is a member of the Abd-B homeobox family and encodes a protein with a homeobox DNA-binding domain. It is included in a cluster of homeobox B genes located on chromosome 17. The encoded nuclear protein functions as a sequence-specific transcription factor that is involved in cell proliferation and differentiation. Increased expression of this gene is associated with some cases of leukemia, prostate cancer and lung cancer. [provided by RefSeq]

Other Designations

homeo box 2E|homeo box B9

Disease

- [Genetic Predisposition to Disease](#)
- [Hip Dislocation](#)