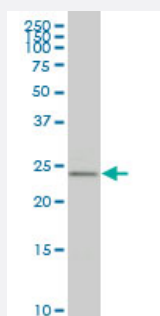


# HOXB9 monoclonal antibody (M06A), clone 2E9

Catalog # H00003219-M06A

Size 200 uL

## Applications



### Western Blot (Cell lysate)

HOXB9 monoclonal antibody (M06A), clone 2E9 Western Blot analysis of HOXB9 expression in 293 ( Cat # L026V1 ).



Western Blot detection against Immunogen (36.52 KDa) .

## Specification

### Product Description

Mouse monoclonal antibody raised against a partial recombinant HOXB9.

### Immunogen

HOXB9 (NP\_076922.1, 65 a.a. ~ 163 a.a) partial recombinant protein with GST tag. MW of the GST tag alone is 26 KDa.

### Sequence

PLSPHASGSLPSVYHPYIQPGQVPPAESRYLRTWLEPAPRGEAAPGQGQAAVKAEP LLGAPGEL  
LKQGTPEYSLETSAGREAVLSNQRPGYGDNKICEG

### Host

Mouse

### Reactivity

Human

### Isotype

IgG2a Kappa

**Quality Control Testing**

Antibody Reactive Against Recombinant Protein.  
Western Blot detection against Immunogen (36.52 KDa) .

**Storage Buffer**

In ascites fluid

**Storage Instruction**

Store at -20°C or lower. Aliquot to avoid repeated freezing and thawing.

## Applications

- Western Blot (Cell lysate)

HOXB9 monoclonal antibody (M06A), clone 2E9 Western Blot analysis of HOXB9 expression in 293 ( Cat # L026V1 ).

[Protocol Download](#)

- Western Blot (Recombinant protein)

[Protocol Download](#)

- ELISA

## Gene Info — HOXB9

**Entrez GeneID**

[3219](#)

**GeneBank Accession#**

[NM\\_024017](#)

**Protein Accession#**

[NP\\_076922.1](#)

**Gene Name**

HOXB9

**Gene Alias**

HOX-2.5, HOX2, HOX2E

**Gene Description**

homeobox B9

**Omim ID**

[142964](#)

**Gene Ontology**

[Hyperlink](#)

**Gene Summary**

This gene is a member of the Abd-B homeobox family and encodes a protein with a homeobox DNA-binding domain. It is included in a cluster of homeobox B genes located on chromosome 17. The encoded nuclear protein functions as a sequence-specific transcription factor that is involved in cell proliferation and differentiation. Increased expression of this gene is associated with some cases of leukemia, prostate cancer and lung cancer. [provided by RefSeq]

**Other Designations**

homeo box 2E|homeo box B9

## Disease

- [Genetic Predisposition to Disease](#)
- [Hip Dislocation](#)