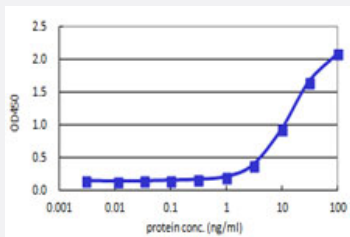


# HOXB7 (Human) Matched Antibody Pair

Catalog # H00003217-AP41

Size 1 Set

## Applications



Sandwich ELISA detection sensitivity ranging from 1 ng/ml to 100 ng/ml.

## Specification

<b>Product Description</b>	This antibody pair set comes with a matched antibody pair to detect and quantify the protein level of human HOXB7.
<b>Reactivity</b>	Human
<b>Quality Control Testing</b>	Standard curve using recombinant protein ( H00003217-Q01 ) as an analyte. Sandwich ELISA detection sensitivity ranging from 1 ng/ml to 100 ng/ml.
<b>Supplied Product</b>	Antibody pair set content: 1. Capture antibody: mouse monoclonal anti-HOXB7, IgG1 Kappa (100 ug) 2. Detection antibody: biotinylated mouse monoclonal anti-HOXB7, IgG1 Kappa (50 ug) *Reagents are sufficient for at least 3-5 x 96 well plates using recommended protocols.
<b>Storage Instruction</b>	Store reagents of the antibody pair set at -20°C or lower. Please aliquot to avoid repeated freeze thaw cycle. Reagents should be returned to -20°C storage immediately after use.

## Applications

- ELISA Pair (Recombinant protein)

[Protocol Download](#)

## Gene Info — HOXB7

Entrez GeneID	<a href="#">3217</a>
Gene Name	HOXB7
Gene Alias	HHO.C1, HOX2, HOX2C, Hox-2.3
Gene Description	homeobox B7
Omim ID	<a href="#">142962</a>
Gene Ontology	<a href="#">Hyperlink</a>
Gene Summary	<p>This gene is a member of the Antp homeobox family and encodes a protein with a homeobox DNA-binding domain. It is included in a cluster of homeobox B genes located on chromosome 17. The encoded nuclear protein functions as a sequence-specific transcription factor that is involved in cell proliferation and differentiation. Increased expression of this gene is associated with some cases of melanoma and ovarian carcinoma. [provided by RefSeq]</p>
Other Designations	homeo box 2C homeo box B7 homeo box c1 protein

## Disease

- [Hirschsprung Disease](#)