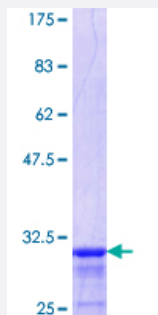


HOXB6 (Human) Recombinant Protein (Q01)

Catalog # H00003216-Q01

Size 25 ug, 10 ug

Applications



Specification

Product Description	Human HOXB6 partial ORF (NP_724779.1, 1 a.a. - 57 a.a.) recombinant protein with GST-tag at N-terminal.
Sequence	MSSYFVNSTFPVTLASGQESFLGQLPLYSSGYADPLRHYPAPYGPGPGQDKGFATSS
Host	Wheat Germ (in vitro)
Theoretical MW (kDa)	32.01
Interspecies Antigen Sequence	Mouse (98); Rat (98)
Preparation Method	in vitro wheat germ expression system
Purification	Glutathione Sepharose 4 Fast Flow
Quality Control Testing	12.5% SDS-PAGE Stained with Coomassie Blue.
Storage Buffer	50 mM Tris-HCl, 10 mM reduced Glutathione, pH=8.0 in the elution buffer.
Storage Instruction	Store at -80°C. Aliquot to avoid repeated freezing and thawing.
Note	Best use within three months from the date of receipt of this protein.

Applications

- Enzyme-linked Immunoabsorbent Assay
- Western Blot (Recombinant protein)
- Antibody Production
- Protein Array

Gene Info — HOXB6

Entrez GeneID	3216
GeneBank Accession#	NM_156037.1
Protein Accession#	NP_724779.1
Gene Name	HOXB6
Gene Alias	HOX2, HOX2B, HU-2, Hox-2.2
Gene Description	homeobox B6
Omim ID	142961
Gene Ontology	Hyperlink
Gene Summary	This gene is a member of the Antp homeobox family and encodes a protein with a homeobox DNA-binding domain. It is included in a cluster of homeobox B genes located on chromosome 17. The encoded protein functions as a sequence-specific transcription factor that is involved in development, including that of lung and skin, and has been localized to both the nucleus and cytoplasm. Altered expression of this gene or a change in the subcellular localization of its protein is associated with some cases of acute myeloid leukemia and colorectal cancer. [provided by RefSeq]
Other Designations	homeo box 2B homeo box B6

Disease

- [Cleft Lip](#)
- [Cleft Palate](#)

- [Hypospadias](#)