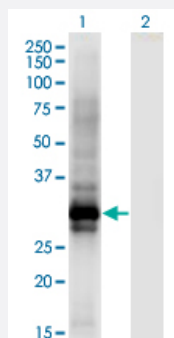


# HOXB6 monoclonal antibody (M01), clone 8E3

Catalog # H00003216-M01

Size 100 ug

## Applications

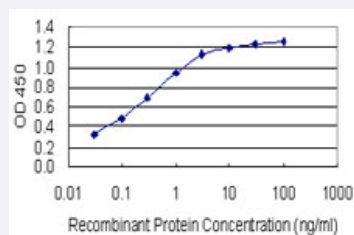


### Western Blot (Transfected lysate)

Western Blot analysis of HOXB6 expression in transfected 293T cell line by HOXB6 monoclonal antibody (M01), clone 8E3.

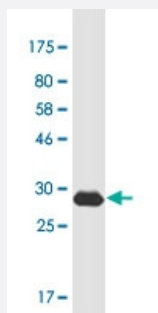
Lane 1: HOXB6 transfected lysate (Predicted MW: 25.4 kDa).

Lane 2: Non-transfected lysate.



### Sandwich ELISA (Recombinant protein)

Detection limit for recombinant GST tagged HOXB6 is 0.03 ng/ml as a capture antibody.



Western Blot detection against Immunogen (32.01 kDa) .

## Specification

### Product Description

Mouse monoclonal antibody raised against a partial recombinant HOXB6.

<b>Immunogen</b>	HOXB6 (NP_724779.1, 1 a.a. ~ 57 a.a) partial recombinant protein with GST tag. MW of the GST tag alone is 26 KDa.
<b>Sequence</b>	MSSYFVNSTFPVTLASGQESFLGQLPLYSSGYADPLRHYPAPYGP GPGQDKGFATSS
<b>Host</b>	Mouse
<b>Reactivity</b>	Human
<b>Interspecies Antigen Sequence</b>	Mouse (98); Rat (98)
<b>Isotype</b>	IgG2a Kappa
<b>Quality Control Testing</b>	Antibody Reactive Against Recombinant Protein. Western Blot detection against Immunogen (32.01 KDa) .
<b>Storage Buffer</b>	In 1x PBS, pH 7.4
<b>Storage Instruction</b>	Store at -20°C or lower. Aliquot to avoid repeated freezing and thawing.

## Applications

- Western Blot (Transfected lysate)

Western Blot analysis of HOXB6 expression in transfected 293T cell line by HOXB6 monoclonal antibody (M01), clone 8E3.

Lane 1: HOXB6 transfected lysate (Predicted MW: 25.4 KDa).

Lane 2: Non-transfected lysate.

[Protocol Download](#)

- Western Blot (Recombinant protein)

[Protocol Download](#)

- Sandwich ELISA (Recombinant protein)

Detection limit for recombinant GST tagged HOXB6 is 0.03 ng/ml as a capture antibody.

[Protocol Download](#)

- ELISA

## Gene Info — HOXB6

Entrez GeneID

[3216](#)

GeneBank Accession#	<a href="#">NM_156037.1</a>
Protein Accession#	<a href="#">NP_724779.1</a>
Gene Name	HOXB6
Gene Alias	HOX2, HOX2B, HU-2, Hox-2.2
Gene Description	homeobox B6
Omim ID	<a href="#">142961</a>
Gene Ontology	<a href="#">Hyperlink</a>
Gene Summary	<p>This gene is a member of the Antp homeobox family and encodes a protein with a homeobox DNA-binding domain. It is included in a cluster of homeobox B genes located on chromosome 17. The encoded protein functions as a sequence-specific transcription factor that is involved in development, including that of lung and skin, and has been localized to both the nucleus and cytoplasm. Altered expression of this gene or a change in the subcellular localization of its protein is associated with some cases of acute myeloid leukemia and colorectal cancer. [provided by RefSeq]</p>
Other Designations	homeo box 2B homeo box B6

## Disease

- [Cleft Lip](#)
- [Cleft Palate](#)
- [Hypospadias](#)