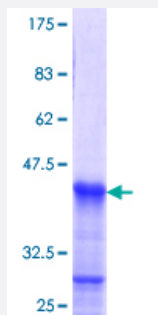


HOXB1 (Human) Recombinant Protein (Q02)

Catalog # H00003211-Q02

Size 25 ug, 10 ug

Applications



Specification

Product Description	Human HOXB1 partial ORF (NP_002135.2, 101 a.a. - 210 a.a.) recombinant protein with GST-tag at N-terminal.
Sequence	LGQSEGDGGYFHPSSYGAQLGGLSDGYGAGGAGPGPYPPQHPPYGNEQTASFAPAYADLLSED KETPCPSEPNTPTARTFDWMKVKNPPKTAKVSEPGLGSPSGLRTNF
Host	Wheat Germ (in vitro)
Theoretical MW (kDa)	37.73
Interspecies Antigen Sequence	Mouse (82); Rat (81)
Preparation Method	in vitro wheat germ expression system
Purification	Glutathione Sepharose 4 Fast Flow
Quality Control Testing	12.5% SDS-PAGE Stained with Coomassie Blue.
Storage Buffer	50 mM Tris-HCl, 10 mM reduced Glutathione, pH=8.0 in the elution buffer.
Storage Instruction	Store at -80°C. Aliquot to avoid repeated freezing and thawing.
Note	Best use within three months from the date of receipt of this protein.

Applications

- Enzyme-linked Immunoabsorbent Assay
- Western Blot (Recombinant protein)
- Antibody Production
- Protein Array

Gene Info — HOXB1

Entrez GeneID [3211](#)

GeneBank Accession# [NM_002144](#)

Protein Accession# [NP_002135.2](#)

Gene Name HOXB1

Gene Alias HOX2, HOX2I, Hox-2.9, MGC116843, MGC116844, MGC116845

Gene Description homeobox B1

Omim ID [142968](#)

Gene Ontology [Hyperlink](#)

Gene Summary This gene belongs to the homeobox family of genes. The homeobox genes encode a highly conserved family of transcription factors that play an important role in morphogenesis in all multicellular organisms. Mammals possess four similar homeobox gene clusters, HOXA, HOXB, HOXC and HOXD, located on different chromosomes, consisting of 9 to 11 genes arranged in tandem. This gene is one of several homeobox HOXB genes located in a cluster on chromosome 17. [provided by RefSeq]

Other Designations homeo box 2||homeo box B1|homeobox protein Hox-B1