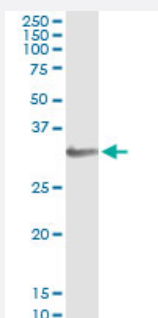


# HOXB1 (Human) IP-WB Antibody Pair

Catalog # H00003211-PW2

Size 1 Set

## Applications



Immunoprecipitation of HOXB1 transfected lysate using mouse monoclonal anti-HOXB1 and Protein A Magnetic Bead ([U0007](#)), and immunoblotted with rabbit polyclonal anti-HOXB1.

## Specification

<b>Product Description</b>	This IP-WB antibody pair set comes with one antibody for immunoprecipitation and another to detect the precipitated protein in western blot.
<b>Reactivity</b>	Human
<b>Interspecies Antigen Sequence</b>	Mouse (81%); Rat (80%)
<b>Quality Control Testing</b>	Immunoprecipitation-Western Blot (IP-WB) Immunoprecipitation of HOXB1 transfected lysate using mouse monoclonal anti-HOXB1 and Protein A Magnetic Bead ( <a href="#">U0007</a> ), and immunoblotted with rabbit polyclonal anti-HOXB1.
<b>Supplied Product</b>	Antibody pair set content: 1. Antibody pair for IP: mouse monoclonal anti-HOXB1 (300 ug) 2. Antibody pair for WB: rabbit polyclonal anti-HOXB1 (50 ul)
<b>Storage Instruction</b>	Store reagents of the antibody pair set at -20°C or lower. Please aliquot to avoid repeated freeze thaw cycle. Reagents should be returned to -20°C storage immediately after use.

## Applications

- Immunoprecipitation-Western Blot

[Protocol Download](#)

## Gene Info — HOXB1

**Entrez GeneID** [3211](#)

**Gene Name** HOXB1

**Gene Alias** HOX2, HOX2I, Hox-2.9, MGC116843, MGC116844, MGC116845

**Gene Description** homeobox B1

**Omim ID** [142968](#)

**Gene Ontology** [Hyperlink](#)

**Gene Summary** This gene belongs to the homeobox family of genes. The homeobox genes encode a highly conserved family of transcription factors that play an important role in morphogenesis in all multicellular organisms. Mammals possess four similar homeobox gene clusters, HOXA, HOXB, HOXC and HOXD, located on different chromosomes, consisting of 9 to 11 genes arranged in tandem. This gene is one of several homeobox HOXB genes located in a cluster on chromosome 17. [provided by RefSeq]

**Other Designations** homeo box 2||homeo box B1|homeobox protein Hox-B1