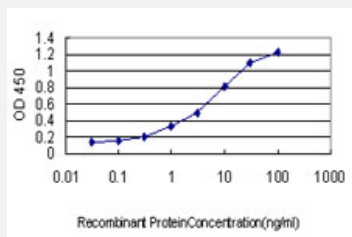


# HOXB1 monoclonal antibody (M04), clone 3A11

Catalog # H00003211-M04

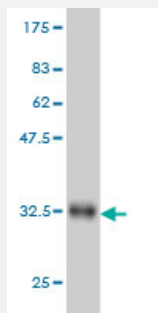
Size 100 ug

## Applications



### Sandwich ELISA (Recombinant protein)

Detection limit for recombinant GST tagged HOXB1 is approximately 0.1ng/ml as a capture antibody.



Western Blot detection against Immunogen (33.88 KDa) .

## Specification

<b>Product Description</b>	Mouse monoclonal antibody raised against a partial recombinant HOXB1.
<b>Immunogen</b>	HOXB1 (NP_002135, 1 a.a. ~ 74 a.a) partial recombinant protein with GST tag. MW of the GST tag alone is 26 KDa.
<b>Sequence</b>	MDYNRMNSFLEYPLCNRGPSAYSASHSAPTSFPPSSAQAVDSYASEGRYGGGLSSPAFQQNSGY PAQQPPSTLGV
<b>Host</b>	Mouse
<b>Reactivity</b>	Human

Interspecies Antigen Sequence	Mouse (82); Rat (85)
Isotype	IgG1 Kappa
Quality Control Testing	Antibody Reactive Against Recombinant Protein. Western Blot detection against Immunogen (33.88 KDa) .
Storage Buffer	In 1x PBS, pH 7.4
Storage Instruction	Store at -20°C or lower. Aliquot to avoid repeated freezing and thawing.

## Applications

- Western Blot (Recombinant protein)

[Protocol Download](#)

- Sandwich ELISA (Recombinant protein)

Detection limit for recombinant GST tagged HOXB1 is approximately 0.1ng/ml as a capture antibody.

[Protocol Download](#)

- ELISA

## Gene Info — HOXB1

Entrez GeneID	<a href="#">3211</a>
GeneBank Accession#	<a href="#">NM_002144</a>
Protein Accession#	<a href="#">NP_002135</a>
Gene Name	HOXB1
Gene Alias	HOX2, HOX2I, Hox-2.9, MGC116843, MGC116844, MGC116845
Gene Description	homeobox B1
Omim ID	<a href="#">142968</a>
Gene Ontology	<a href="#">Hyperlink</a>

**Gene Summary**

This gene belongs to the homeobox family of genes. The homeobox genes encode a highly conserved family of transcription factors that play an important role in morphogenesis in all multicellular organisms. Mammals possess four similar homeobox gene clusters, HOXA, HOXB, HOXC and HOXD, located on different chromosomes, consisting of 9 to 11 genes arranged in tandem. This gene is one of several homeobox HOXB genes located in a cluster on chromosome 17. [provided by RefSeq]

**Other Designations**

homeobox 2||homeobox B1||homeobox protein Hox-B1