

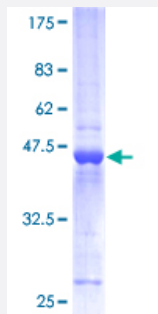
Full-Length

HPCA (Human) Recombinant Protein (P01)

Catalog # H00003208-P01

Size 25 ug, 10 ug

Applications



Specification

Product Description	Human HPCA full-length ORF (NP_002134, 1 a.a. - 193 a.a.) recombinant protein with GST-tag at N-terminal.
Sequence	MGKQNSKLRP EMLQDLRENTFSELELQEWYKGFLKDCPTGILNVDEFKKIYANFFPYGDASKFA EHVFRFTD TNSDGTIDFREFIALSVTSPGRLEQKLMWAFSMYDLDGNGYISREEMLEIVQAIYKMV SSVMKMPED ESTPEKRTEKIFRQMDTNNDGKLSLEEFIRGA KSDPSIVRLLQCDPSSRSQF
Host	Wheat Germ (in vitro)
Theoretical MW (kDa)	46.86
Preparation Method	in vitro wheat germ expression system
Purification	Glutathione Sepharose 4 Fast Flow
Quality Control Testing	12.5% SDS-PAGE Stained with Coomassie Blue.
Storage Buffer	50 mM Tris-HCl, 10 mM reduced Glutathione, pH=8.0 in the elution buffer.
Storage Instruction	Store at -80°C. Aliquot to avoid repeated freezing and thawing.
Note	Best use within three months from the date of receipt of this protein.

Applications

- Enzyme-linked Immunoabsorbent Assay
- Western Blot (Recombinant protein)
- Antibody Production
- Protein Array

Gene Info — HPCA

Entrez GeneID [3208](#)

GeneBank Accession# [NM_002143.1](#)

Protein Accession# [NP_002134](#)

Gene Name HPCA

Gene Alias BDR2

Gene Description hippocalcin

Omim ID [142622](#)

Gene Ontology [Hyperlink](#)

Gene Summary The protein encoded by this gene is a member of neuron-specific calcium-binding proteins family found in the retina and brain. This protein is associated with the plasma membrane. It has similarities to proteins located in the photoreceptor cells that regulate photosignal transduction in a calcium-sensitive manner. This protein displays recoverin activity and a calcium-dependent inhibition of rhodopsin kinase. It is identical to the rat and mouse hippocalcin proteins and thought to play an important role in neurons of the central nervous system in a number of species. [provided by RefSeq]

Other Designations OTTHUMP00000004138|neuron specific calcium-binding protein hippocalcin