

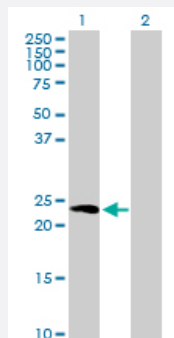
MaxPab®

HPCA purified MaxPab mouse polyclonal antibody (B01P)

Catalog # H00003208-B01P

Size 50 ug

Applications

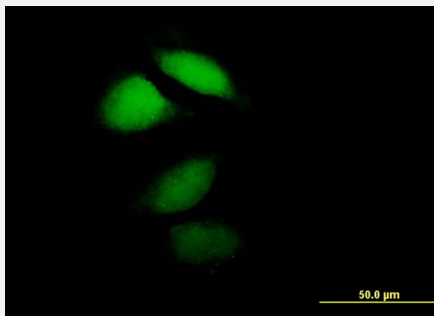


Western Blot (Transfected lysate)

Western Blot analysis of HPCA expression in transfected 293T cell line ([H00003208-T01](#)) by HPCA MaxPab polyclonal antibody.

Lane 1: HPCA transfected lysate(21.23 KDa).

Lane 2: Non-transfected lysate.



Immunofluorescence

Immunofluorescence of purified MaxPab antibody to HPCA on HeLa cell. [antibody concentration 10 ug/ml]

Specification

Product Description	Mouse polyclonal antibody raised against a full-length human HPCA protein.
Immunogen	HPCA (NP_002134, 1 a.a. ~ 193 a.a) full-length human protein.
Sequence	MGKQNSKLRPEMLQDLRENTFSELELQEWYKGFLKDCPTGILNVDEFKKIYANFFPYGDASKFA EHVFRFTDNTSDGTIDFREFIALSVTSPGRLEQKLMWAFSMYDLDGNGYSREEMLEIVQAIYKMV SSVMKMPEDSTPEKRTEKIFRQMDTNNNDGKLSLEEFIRGAKSDPSIVRLLQCDPSSRSQF
Host	Mouse
Reactivity	Human

Quality Control Testing	Antibody reactive against mammalian transfected lysate.
Storage Buffer	In 1x PBS, pH 7.4
Storage Instruction	Store at -20°C or lower. Aliquot to avoid repeated freezing and thawing.

Applications

- Western Blot (Transfected lysate)

Western Blot analysis of HPCA expression in transfected 293T cell line ([H00003208-T01](#)) by HPCA MaxPab polyclonal antibody.

Lane 1: HPCA transfected lysate(21.23 KDa).

Lane 2: Non-transfected lysate.

[Protocol Download](#)

- Immunofluorescence

Immunofluorescence of purified MaxPab antibody to HPCA on HeLa cell. [antibody concentration 10 ug/ml]

Gene Info — HPCA

Entrez GeneID	3208
GeneBank Accession#	NM_002143
Protein Accession#	NP_002134
Gene Name	HPCA
Gene Alias	BDR2
Gene Description	hippocalcin
Omim ID	142622
Gene Ontology	Hyperlink

Gene Summary	The protein encoded by this gene is a member of neuron-specific calcium-binding proteins family found in the retina and brain. This protein is associated with the plasma membrane. It has similarities to proteins located in the photoreceptor cells that regulate photosignal transduction in a calcium-sensitive manner. This protein displays recoverin activity and a calcium-dependent inhibition of rhodopsin kinase. It is identical to the rat and mouse hippocalcin proteins and thought to play an important role in neurons of the central nervous system in a number of species. [provided by RefSeq]
--------------	---

Other DesignationsOTTHUMP00000004138|neuron specific calcium-binding protein hippocalcin
