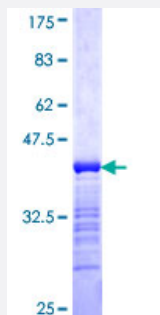


# HOXA11 (Human) Recombinant Protein (Q01)

Catalog # H00003207-Q01

Size 25 ug, 10 ug

## Applications



## Specification

<b>Product Description</b>	Human HOXA11 partial ORF ( NP_005514, 60 a.a. - 166 a.a.) recombinant protein with GST-tag at N-terminal.
<b>Sequence</b>	VTFREYAIEPATKWHPRGNLAHCYSAEELVHRDCLQAPSAAGVPGDVLAKSSANVYHHPTPAVS SNFYSTVGRNGVLPQAFDQFFETAYGTPENLASSDYPGDKSAE
<b>Host</b>	Wheat Germ (in vitro)
<b>Theoretical MW (kDa)</b>	37.51
<b>Preparation Method</b>	<a href="#">in vitro wheat germ expression system</a>
<b>Purification</b>	Glutathione Sepharose 4 Fast Flow
<b>Quality Control Testing</b>	12.5% SDS-PAGE Stained with Coomassie Blue.
<b>Storage Buffer</b>	50 mM Tris-HCl, 10 mM reduced Glutathione, pH=8.0 in the elution buffer.
<b>Storage Instruction</b>	Store at -80°C. Aliquot to avoid repeated freezing and thawing.
<b>Note</b>	Best use within three months from the date of receipt of this protein.

## Applications

- Enzyme-linked Immunoabsorbent Assay
- Western Blot (Recombinant protein)
- Antibody Production
- Protein Array

## Gene Info — HOXA11

Entrez GeneID [3207](#)

GeneBank Accession# [NM\\_005523](#)

Protein Accession# [NP\\_005514](#)

Gene Name HOXA11

Gene Alias HOX1, HOX11

Gene Description homeobox A11

Omim ID [142958 605432](#)

Gene Ontology [Hyperlink](#)

**Gene Summary** In vertebrates, the genes encoding the class of transcription factors called homeobox genes are found in clusters named A, B, C, and D on four separate chromosomes. Expression of these proteins is spatially and temporally regulated during embryonic development. This gene is part of the A cluster on chromosome 7 and encodes a DNA-binding transcription factor which may regulate gene expression, morphogenesis, and differentiation. This gene is involved in the regulation of uterine development and is required for female fertility. Mutations in this gene can cause radio-ulnar synostosis with amegakaryocytic thrombocytopenia. [provided by RefSeq]

**Other Designations** OTTHUMP00000025055|homeobox 1|homeobox A11|homeobox protein HOXA11

## Disease

- [Clubfoot](#)
- [Congenital Abnormalities](#)