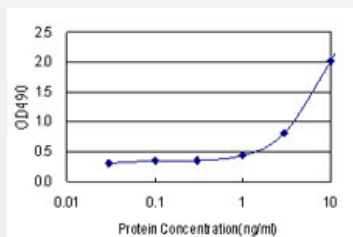


HOXA1 (Human) Matched Antibody Pair

Catalog # H00003198-AP21

Size 1 Set

Applications



Sandwich ELISA detection sensitivity ranging from 3 ng/ml to 100 ng/ml.

Specification

Product Description

This antibody pair set comes with a matched antibody pair to detect and quantify the protein level of human HOXA1.

Reactivity

Human

Quality Control Testing

Standard curve using recombinant protein (H00003198-P01) as an analyte.
Sandwich ELISA detection sensitivity ranging from 3 ng/ml to 100 ng/ml.

Supplied Product

Antibody pair set content:

1. Capture antibody: rabbit MaxPab® affinity purified polyclonal anti-HOXA1 (100 ug)
2. Detection antibody: mouse purified polyclonal anti-HOXA1 (20 ug)

*Reagents are sufficient for at least 1-2 x 96 well plates using recommended protocols.

Storage Instruction

Store reagents of the antibody pair set at -20°C or lower. Please aliquot to avoid repeated freeze thaw cycle. Reagents should be returned to -20°C storage immediately after use.

Applications

- ELISA Pair (Recombinant protein)

[Protocol Download](#)

Gene Info — HOXA1

Entrez GeneID	3198
Gene Name	HOXA1
Gene Alias	BSAS, HOX1, HOX1F, MGC45232
Gene Description	homeobox A1
Omim ID	142955 601536
Gene Ontology	Hyperlink
Gene Summary	In vertebrates, the genes encoding the class of transcription factors called homeobox genes are found in clusters named A, B, C, and D on four separate chromosomes. Expression of these proteins is spatially and temporally regulated during embryonic development. This gene is part of the A cluster on chromosome 7 and encodes a DNA-binding transcription factor which may regulate gene expression, morphogenesis, and differentiation. The encoded protein may be involved in the placement of hindbrain segments in the proper location along the anterior-posterior axis during development. Two transcript variants encoding two different isoforms have been found for this gene, with only one of the isoforms containing the homeodomain region. [provided by RefSeq]
Other Designations	HOX A1 homeodomain protein Hox 1.6-like protein homeo box A1 homeobox 1F homeobox protein HOX-A1 lab-like protein

Disease

- [Asperger Syndrome](#)
- [Autistic Disorder](#)
- [Child Development Disorders](#)
- [Fragile X syndrome](#)
- [Functional Laterality](#)
- [Genetic Predisposition to Disease](#)
- [Mental Disorders](#)
- [Schizophrenia](#)
- [Social Perception](#)