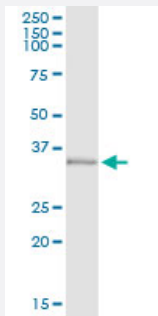


FOXA3 (Human) IP-WB Antibody Pair

Catalog # H00003171-PW1

Size 1 Set

Applications



Immunoprecipitation of FOXA3 transfected lysate using rabbit polyclonal anti-FOXA3 and Protein A Magnetic Bead ([U0007](#)), and immunoblotted with mouse polyclonal anti-FOXA3.

Specification

Product Description	This IP-WB antibody pair set comes with one antibody for immunoprecipitation and another to detect the precipitated protein in western blot.
Reactivity	Human
Quality Control Testing	Immunoprecipitation-Western Blot (IP-WB) Immunoprecipitation of FOXA3 transfected lysate using rabbit polyclonal anti-FOXA3 and Protein A Magnetic Bead (U0007), and immunoblotted with mouse polyclonal anti-FOXA3.
Supplied Product	Antibody pair set content: 1. Antibody pair for IP: rabbit polyclonal anti-FOXA3 (300 ul) 2. Antibody pair for WB: mouse polyclonal anti-FOXA3 (50 ul)
Storage Instruction	Store reagents of the antibody pair set at -20°C or lower. Please aliquot to avoid repeated freeze thaw cycle. Reagents should be returned to -20°C storage immediately after use.

Applications

- Immunoprecipitation-Western Blot

[Protocol Download](#)

Gene Info — FOXA3

Entrez GeneID	3171
Gene Name	FOXA3
Gene Alias	FKHH3, HNF3G, MGC10179, TCF3G
Gene Description	forkhead box A3
Omim ID	602295
Gene Ontology	Hyperlink
Gene Summary	<p>This gene encodes a member of the forkhead class of DNA-binding proteins. These hepatocyte nuclear factors are transcriptional activators for liver-specific transcripts such as albumin and transthyretin, and they also interact with chromatin. Similar family members in mice have roles in the regulation of metabolism and in the differentiation of the pancreas and liver. The crystal structure of a similar protein in rat has been resolved. [provided by RefSeq]</p>
Other Designations	hepatocyte nuclear factor 3, gamma

Pathway

- [Maturity onset diabetes of the young](#)