

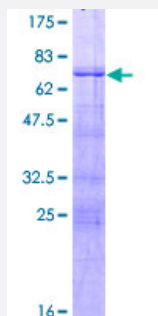
Full-Length

FOXA3 (Human) Recombinant Protein (P01)

Catalog # H00003171-P01

Size 25 ug, 10 ug

Applications



Specification

Product Description

Human FOXA3 full-length ORF (NP_004488.2, 1 a.a. - 350 a.a.) recombinant protein with GST-tag at N-terminal.

Sequence

MLGSVKMEAHDLAEWSYYPEAGEVYSPVTPVPTMAPLNSYMTLNPLSSPYPPGGLPASPLPSGP
LAPPAPAAPLGPTFPGLGVSGGSSSSGYGAPGPGLVHGKEMPKGYYRPLAHAKPPYSYISLITMAI
QQAPGKMLTLSEIQWIMDLFPYYRENQQRWQNSIRHLSFNDCFKVARSPDKPGKGSYWALH
PSSGNMFENGCYLRRQKRFKLEEKVKKGGSGAATTRNGTGSAASTTTAATVTSPQPPPPAP
EPEAQGGEDVGALDCGSPASSTPYFTGLELPGELKLDAPYNFNHPFSINNLMSQTPAPPKLDV
GFGGYGAEGGEPGVYQGLYSRLLNAS

Host

Wheat Germ (in vitro)

Theoretical MW (kDa)

63.5

Preparation Method

[in vitro wheat germ expression system](#)

Purification

Glutathione Sepharose 4 Fast Flow

Quality Control Testing

12.5% SDS-PAGE Stained with Coomassie Blue.

Storage Buffer

50 mM Tris-HCl, 10 mM reduced Glutathione, pH=8.0 in the elution buffer.

Storage Instruction

Store at -80°C. Aliquot to avoid repeated freezing and thawing.

Note

Best use within three months from the date of receipt of this protein.

Applications

- Enzyme-linked Immunoabsorbent Assay
- Western Blot (Recombinant protein)
- Antibody Production
- Protein Array

Gene Info — FOXA3

Entrez GeneID [3171](#)

GeneBank Accession# [NM_004497.2](#)

Protein Accession# [NP_004488.2](#)

Gene Name FOXA3

Gene Alias FKHH3, HNF3G, MGC10179, TCF3G

Gene Description forkhead box A3

Omim ID [602295](#)

Gene Ontology [Hyperlink](#)

Gene Summary This gene encodes a member of the forkhead class of DNA-binding proteins. These hepatocyte nuclear factors are transcriptional activators for liver-specific transcripts such as albumin and transthyretin, and they also interact with chromatin. Similar family members in mice have roles in the regulation of metabolism and in the differentiation of the pancreas and liver. The crystal structure of a similar protein in rat has been resolved. [provided by RefSeq]

Other Designations hepatocyte nuclear factor 3, gamma

Pathway

- [Maturity onset diabetes of the young](#)