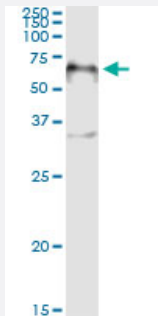


FOXA2 (Human) IP-WB Antibody Pair

Catalog # H00003170-PW2

Size 1 Set

Applications



Immunoprecipitation of FOXA2 transfected lysate using mouse monoclonal anti-FOXA2 and Protein A Magnetic Bead ([U0007](#)), and immunoblotted with rabbit polyclonal anti-FOXA2.

Specification

Product Description	This IP-WB antibody pair set comes with one antibody for immunoprecipitation and another to detect the precipitated protein in western blot.
Reactivity	Human
Quality Control Testing	Immunoprecipitation-Western Blot (IP-WB) Immunoprecipitation of FOXA2 transfected lysate using mouse monoclonal anti-FOXA2 and Protein A Magnetic Bead (U0007), and immunoblotted with rabbit polyclonal anti-FOXA2.
Supplied Product	Antibody pair set content: 1. Antibody pair for IP: mouse monoclonal anti-FOXA2 (300 ug) 2. Antibody pair for WB: rabbit polyclonal anti-FOXA2 (50 ul)
Storage Instruction	Store reagents of the antibody pair set at -20°C or lower. Please aliquot to avoid repeated freeze thaw cycle. Reagents should be returned to -20°C storage immediately after use.

Applications

- Immunoprecipitation-Western Blot

[Protocol Download](#)

Gene Info — FOXA2

Entrez GeneID	3170
Gene Name	FOXA2
Gene Alias	HNF3B, MGC19807, TCF3B
Gene Description	forkhead box A2
Omim ID	600288
Gene Ontology	Hyperlink
Gene Summary	This gene encodes a member of the forkhead class of DNA-binding proteins. These hepatocyte nuclear factors are transcriptional activators for liver-specific genes such as albumin and transthyretin, and they also interact with chromatin. Similar family members in mice have roles in the regulation of metabolism and in the differentiation of the pancreas and liver. This gene has been linked to sporadic cases of maturity-onset diabetes of the young. Transcript variants encoding different isoforms have been identified for this gene. [provided by RefSeq]
Other Designations	OTTHUMP00000030409 OTTHUMP00000030410 hepatic nuclear factor-3-beta hepatocyte nuclear factor 3, beta

Pathway

- [Maturity onset diabetes of the young](#)

Disease

- [Cardiovascular Diseases](#)
- [Diabetes Mellitus](#)
- [Edema](#)
- [Genetic Predisposition to Disease](#)
- [Obesity](#)