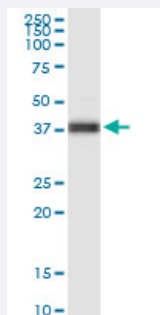


# FOXA2 monoclonal antibody (M07), clone 4C2

Catalog # H00003170-M07

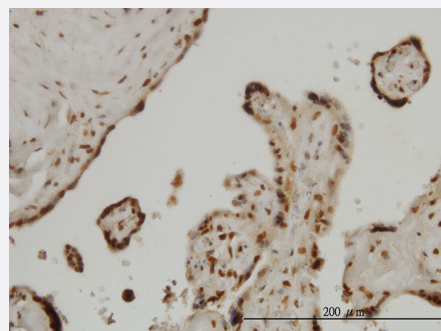
Size 100 ug

## Applications



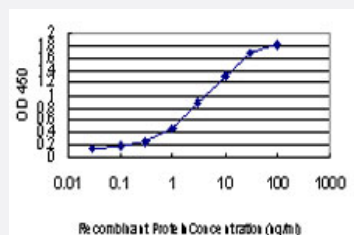
### Western Blot (Tissue lysate)

FOXA2 monoclonal antibody (M07), clone 4C2. Western Blot analysis of FOXA2 expression in human pancreas.



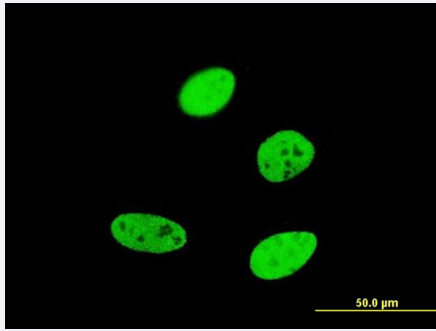
### Immunohistochemistry (Formalin/PFA-fixed paraffin-embedded sections)

Immunoperoxidase of monoclonal antibody to FOXA2 on formalin-fixed paraffin-embedded human placenta. [antibody concentration 3 ug/ml]



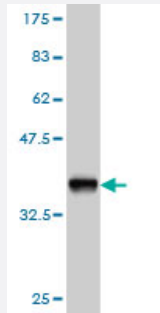
### Sandwich ELISA (Recombinant protein)

Detection limit for recombinant GST tagged FOXA2 is approximately 0.03ng/ml as a capture antibody.



## Immunofluorescence

Immunofluorescence of monoclonal antibody to FOXA2 on HeLa cell . [antibody concentration 10 ug/ml]



Western Blot detection against Immunogen (36.19 KDa) .

## Specification

<b>Product Description</b>	Mouse monoclonal antibody raised against a partial recombinant FOXA2.
<b>Immunogen</b>	FOXA2 (NP_068556, 363 a.a. ~ 457 a.a) partial recombinant protein with GST tag. MW of the GST tag alone is 26 KDa.
<b>Sequence</b>	HLKPEHHYAFNHPFSINNLMSSSEQHHHSHHHHQPHKMDLKAYEQVMHYPGYGSPMPGSLAMG PVTNKTGLDASPLAADTSYYQGVYSRPIMNSS
<b>Host</b>	Mouse
<b>Reactivity</b>	Human
<b>Isotype</b>	IgG1 Kappa
<b>Quality Control Testing</b>	Antibody Reactive Against Recombinant Protein. Western Blot detection against Immunogen (36.19 KDa) .
<b>Storage Buffer</b>	In 1x PBS, pH 7.4
<b>Storage Instruction</b>	Store at -20°C or lower. Aliquot to avoid repeated freezing and thawing.

## Applications

- Western Blot (Tissue lysate)

FOXA2 monoclonal antibody (M07), clone 4C2. Western Blot analysis of FOXA2 expression in human pancreas.

[Protocol Download](#)

- Western Blot (Recombinant protein)

[Protocol Download](#)

- Immunohistochemistry (Formalin/PFA-fixed paraffin-embedded sections)

Immunoperoxidase of monoclonal antibody to FOXA2 on formalin-fixed paraffin-embedded human placenta. [antibody concentration 3 ug/ml]

[Protocol Download](#)

- Sandwich ELISA (Recombinant protein)

Detection limit for recombinant GST tagged FOXA2 is approximately 0.03ng/ml as a capture antibody.

[Protocol Download](#)

- ELISA

- Immunofluorescence

Immunofluorescence of monoclonal antibody to FOXA2 on HeLa cell . [antibody concentration 10 ug/ml]

## Gene Info — FOXA2

Entrez GeneID	<a href="#">3170</a>
---------------	----------------------

GeneBank Accession#	<a href="#">NM_021784</a>
---------------------	---------------------------

Protein Accession#	<a href="#">NP_068556</a>
--------------------	---------------------------

Gene Name	FOXA2
-----------	-------

Gene Alias	HNF3B, MGC19807, TCF3B
------------	------------------------

Gene Description	forkhead box A2
------------------	-----------------

Omim ID	<a href="#">600288</a>
---------	------------------------

Gene Ontology	<a href="#">Hyperlink</a>
---------------	---------------------------

**Gene Summary**

This gene encodes a member of the forkhead class of DNA-binding proteins. These hepatocyte nuclear factors are transcriptional activators for liver-specific genes such as albumin and transthyretin, and they also interact with chromatin. Similar family members in mice have roles in the regulation of metabolism and in the differentiation of the pancreas and liver. This gene has been linked to sporadic cases of maturity-onset diabetes of the young. Transcript variants encoding different isoforms have been identified for this gene. [provided by RefSeq]

**Other Designations**

OTTHUMP00000030409|OTTHUMP00000030410|hepatic nuclear factor-3-beta|hepatocyte nuclear factor 3, beta

**Pathway**

- [Maturity onset diabetes of the young](#)

**Disease**

- [Cardiovascular Diseases](#)
- [Diabetes Mellitus](#)
- [Edema](#)
- [Genetic Predisposition to Disease](#)
- [Obesity](#)