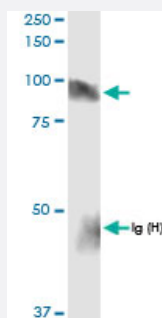


HLCS (Human) IP-WB Antibody Pair

Catalog # H00003141-PW1

Size 1 Set

Applications



Immunoprecipitation of HLCS transfected lysate using rabbit polyclonal anti-HLCS and Protein A Magnetic Bead ([U0007](#)), and immunoblotted with rabbit polyclonal anti-HLCS.

Specification

Product Description	This IP-WB antibody pair set comes with one antibody for immunoprecipitation and another to detect the precipitated protein in western blot.
Reactivity	Human
Interspecies Antigen Sequence	Mouse (76%)
Quality Control Testing	Immunoprecipitation-Western Blot (IP-WB) Immunoprecipitation of HLCS transfected lysate using rabbit polyclonal anti-HLCS and Protein A Magnetic Bead (U0007), and immunoblotted with rabbit polyclonal anti-HLCS.
Supplied Product	Antibody pair set content: 1. Antibody pair for IP: rabbit polyclonal anti-HLCS (300 ul) 2. Antibody pair for WB: rabbit polyclonal anti-HLCS (50 ul)
Storage Instruction	Store reagents of the antibody pair set at -20°C or lower. Please aliquot to avoid repeated freeze thaw cycle. Reagents should be returned to -20°C storage immediately after use.

Applications

- Immunoprecipitation-Western Blot

[Protocol Download](#)

Gene Info — HLCS

Entrez GeneID	3141
Gene Name	HLCS
Gene Alias	HCS
Gene Description	holocarboxylase synthetase (biotin-(propionyl-Coenzyme A-carboxylase (ATP-hydrolysing)) ligase)
Omim ID	253270 609018
Gene Ontology	Hyperlink
Gene Summary	Holocarboxylase synthetase (EC 6.3.4.10) covalently links biotin to propionyl-CoA carboxylase (PCCA; MIM 232000), pyruvate carboxylase (PC; MIM 608786), alpha-methylcrotonyl-CoA carboxylase (MCCC1; MIM 609010), and acetyl-CoA carboxylase (ACACA; MIM 200350).[supplied by OMIM]
Other Designations	OTTHUMP00000109039 biotin apo-protein ligase holocarboxylase synthetase

Pathway

- [Biotin metabolism](#)
- [Metabolic pathways](#)