

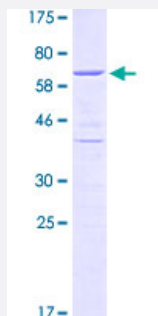
Full-Length

HDGF (Human) Recombinant Protein (P01)

Catalog # H00003068-P01

Size 25 ug, 10 ug

Applications



Specification

Product Description

Human HDGF full-length ORF (NP_004485.1, 1 a.a. - 240 a.a.) recombinant protein with GST-tag at N-terminal.

Sequence

MSRSNRQKEYKCGDLVFAKMKGYPHWPARIDEMPEAAVKSTANKYQVFFFGTHETAFLGPKDLF
PYEESKEKFGKPNKRKFSEGLWEIENNPTVKASGYQSSQKKSCVEEPEPEPEAAEGDGDKKG
NAEGSSDEEGKLVIDEPAKEKNEKGALKRRAGDILLEDSPKRPKEAENPEGEEKEAATLEVERPL
PMEVEKNSTPSEPGSGRGPPEEEEEEEEEEEATKEDAEAPGIRDHESL

Host

Wheat Germ (in vitro)

Theoretical MW (kDa)

53.2

Interspecies Antigen Sequence

Mouse (86); Rat (88)

Preparation Method

[in vitro wheat germ expression system](#)

Purification

Glutathione Sepharose 4 Fast Flow

Quality Control Testing

12.5% SDS-PAGE Stained with Coomassie Blue.

Storage Buffer

50 mM Tris-HCl, 10 mM reduced Glutathione, pH=8.0 in the elution buffer.

Storage Instruction

Store at -80°C. Aliquot to avoid repeated freezing and thawing.

Note

Best use within three months from the date of receipt of this protein.

Applications

- Enzyme-linked Immunoabsorbent Assay
- Western Blot (Recombinant protein)
- Antibody Production
- Protein Array

Gene Info — HDGF

Entrez GeneID [3068](#)

GeneBank Accession# [NM_004494.1](#)

Protein Accession# [NP_004485.1](#)

Gene Name HDGF

Gene Alias DKFZp686J1764, FLJ96580, HMG1L2

Gene Description hepatoma-derived growth factor (high-mobility group protein 1-like)

Omim ID [600339](#)

Gene Ontology [Hyperlink](#)

Gene Summary This gene encodes a member of the hepatoma-derived growth factor family. The encoded protein has mitogenic and DNA-binding activity and may play a role in cellular proliferation and differentiation. This gene was thought initially to be located on chromosome X, however, that location has been determined to correspond to a related pseudogene. Alternatively spliced transcript variants encoding distinct isoforms have been described. [provided by RefSeq]

Other Designations OTTHUMP00000038721|hepatoma-derived growth factor