

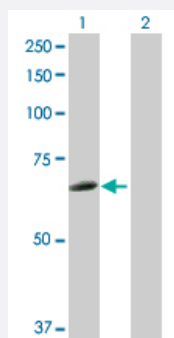
MaxPab®

HCK purified MaxPab rabbit polyclonal antibody (D01P)

Catalog # H00003055-D01P

Size 100 ug

Applications

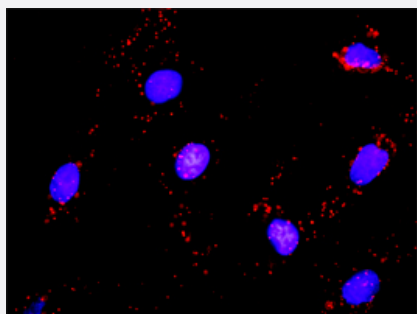


Western Blot (Transfected lysate)

Western Blot analysis of HCK expression in transfected 293T cell line ([H00003055-T02](#)) by HCK MaxPab polyclonal antibody.

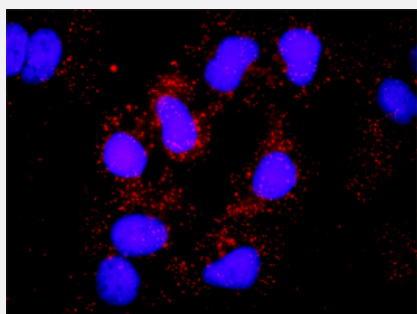
Lane 1: HCK transfected lysate(57.30 KDa).

Lane 2: Non-transfected lysate.



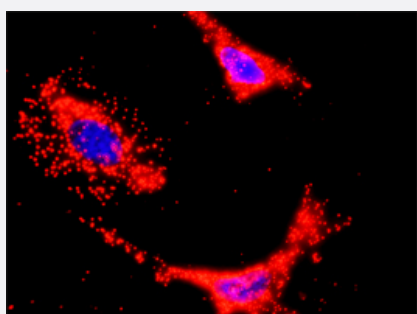
In situ Proximity Ligation Assay (Cell)

Proximity Ligation Analysis of protein-protein interactions between HCK and CRKL. Mahlavu cells were stained with anti-HCK rabbit purified polyclonal 1:1200 and anti-CRKL mouse monoclonal antibody 1:50. Each red dot represents the detection of protein-protein interaction complex, and nuclei were counterstained with DAPI (blue).



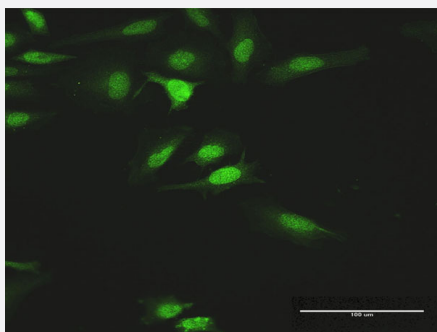
In situ Proximity Ligation Assay (Cell)

Proximity Ligation Analysis of protein-protein interactions between HCK and SOS1. Huh7 cells were stained with anti-HCK rabbit purified polyclonal 1:1200 and anti-SOS1 mouse monoclonal antibody 1:50. Each red dot represents the detection of protein-protein interaction complex, and nuclei were counterstained with DAPI (blue).



In situ Proximity Ligation Assay (Cell)

Proximity Ligation Analysis of protein-protein interactions between HCK and PIK3CB. HeLa cells were stained with anti-HCK rabbit purified polyclonal 1:1200 and anti-PIK3CB mouse monoclonal antibody 1:50. Each red dot represents the detection of protein-protein interaction complex, and nuclei were counterstained with DAPI (blue).



Immunofluorescence

Immunofluorescence of purified MaxPab antibody to HCK on HeLa cell.
[antibody concentration 10 ug/ml]

Specification

Product Description	Rabbit polyclonal antibody raised against a full-length human HCK protein.
Immunogen	HCK (ENSP00000365012, 1 a.a. ~ 505 a.a) full-length human protein.
Sequence	MGCMKSKFLQVGGNTFSKTETSASPHCPVYVPDPTSTIKPGPNSHNSNTPGIREAGSEDIIVVALY DYEAIHHEDLSFQKGDQMVVLEESGEWWKARSLATRKEGYPSNYVARVDSLETEEWFFKGISR KDAERQLLAPGNMLGSFMIRDSETTKGSYLSVRDYDPRQGDTVKHYKIRTLDNNGGFYISPRSTFS TLQELVDHYKKGNDGLCQKLSVPCMSKPKPWEKDAWEIPRESLKLEKKLGAGQFGEVWMA TYNKHTKVAVKTMKPGSMSVEAFLAEANVMKTLQHDKLVKLHAVVTKEPMITEFMAKGSLLDFL KSDEGSKQPLPKLIDFSAQIAEGMAFIEQRNYIHRDLRAANILVSASLVCKIADFGLARVIEDNEYTA REGAKFPIKWTAPEAINFGSFTIKSDVVSFGILLMEINTYGRIPYPGMSNPEVIRALERGYRMPRPEN CPEELYNIMMRCWKNRPEERPTFEYQSVLDDFYTATESQYQQQP
Host	Rabbit
Reactivity	Human
Quality Control Testing	Antibody reactive against mammalian transfected lysate.
Storage Buffer	In 1x PBS, pH 7.4
Storage Instruction	Store at -20°C or lower. Aliquot to avoid repeated freezing and thawing.

Applications

● Western Blot (Transfected lysate)

Western Blot analysis of HCK expression in transfected 293T cell line ([H00003055-T02](#)) by HCK MaxPab polyclonal antibody.

Lane 1: HCK transfected lysate(57.30 KDa).

Lane 2: Non-transfected lysate.

[Protocol Download](#)

- *In situ* Proximity Ligation Assay (Cell)

Proximity Ligation Analysis of protein-protein interactions between HCK and CRKL. Mahlavu cells were stained with anti-HCK rabbit purified polyclonal 1:1200 and anti-CRKL mouse monoclonal antibody 1:50. Each red dot represents the detection of protein-protein interaction complex, and nuclei were counterstained with DAPI (blue).

- *In situ* Proximity Ligation Assay (Cell)

Proximity Ligation Analysis of protein-protein interactions between HCK and SOS1. Huh7 cells were stained with anti-HCK rabbit purified polyclonal 1:1200 and anti-SOS1 mouse monoclonal antibody 1:50. Each red dot represents the detection of protein-protein interaction complex, and nuclei were counterstained with DAPI (blue).

- *In situ* Proximity Ligation Assay (Cell)

Proximity Ligation Analysis of protein-protein interactions between HCK and PIK3CB. HeLa cells were stained with anti-HCK rabbit purified polyclonal 1:1200 and anti-PIK3CB mouse monoclonal antibody 1:50. Each red dot represents the detection of protein-protein interaction complex, and nuclei were counterstained with DAPI (blue).

- Immunofluorescence

Immunofluorescence of purified MaxPab antibody to HCK on HeLa cell. [antibody concentration 10 ug/ml]

Gene Info — HCK

Entrez GeneID [3055](#)

GeneBank Accession# [ENST00000375852](#)

Protein Accession# [ENSP00000365012](#)

Gene Name HCK

Gene Alias JTK9

Gene Description hemopoietic cell kinase

Omim ID [142370](#)

Gene Ontology [Hyperlink](#)

Gene Summary The protein encoded by this gene is a protein-tyrosine kinase that is predominantly expressed in hemopoietic cell types. The encoded protein may help couple the Fc receptor to the activation of the respiratory burst. In addition, it may play a role in neutrophil migration and in the degranulation of neutrophils. Alternate translation initiation site usage, including a non-AUG (CUG) codon, results in the production of two different isoforms, that have different subcellular localization. [provided by RefSeq]

Other Designations tyrosine protein kinase HCK

Pathway

- [Chemokine signaling pathway](#)
- [Fc gamma R-mediated phagocytosis](#)

Disease

- [HIV Infections](#)
- [Pulmonary Disease](#)