

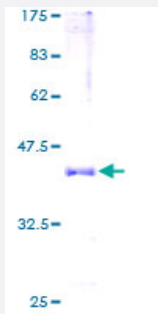
Full-Length

HBA2 (Human) Recombinant Protein (P01)

Catalog # H00003040-P01

Size 25 ug, 10 ug

Applications



Specification

Product Description	Human HBA2 full-length ORF (AAH05931, 1 a.a. - 142 a.a.) recombinant protein with GST-tag at N-terminal.
Sequence	MVLSPADKTNVKAAWGKVGAGHAGEYGAEALERMFLSFPTTKTYFPHFDLSHGSAQVKGHGKKVADALTNAVAHVDDMPNALSALSDLHAHKLRVDPVNFKLLSHCLLVTLAAHLPAEFTPAVHASLDKFLASVSTVLTSKYR
Host	Wheat Germ (in vitro)
Theoretical MW (kDa)	41.36
Preparation Method	in vitro wheat germ expression system
Purification	Glutathione Sepharose 4 Fast Flow
Quality Control Testing	12.5% SDS-PAGE Stained with Coomassie Blue.
Storage Buffer	50 mM Tris-HCl, 10 mM reduced Glutathione, pH=8.0 in the elution buffer.
Storage Instruction	Store at -80°C. Aliquot to avoid repeated freezing and thawing.
Note	Best use within three months from the date of receipt of this protein.

Applications

- Enzyme-linked Immunoabsorbent Assay
- Western Blot (Recombinant protein)
- Antibody Production
- Protein Array

Gene Info — HBA2

Entrez GeneID [3040](#)

GeneBank Accession# [BC005931](#)

Protein Accession# [AAH05931](#)

Gene Name HBA2

Gene Alias -

Gene Description hemoglobin, alpha 2

Omim ID [141850](#)

Gene Ontology [Hyperlink](#)

Gene Summary The human alpha globin gene cluster located on chromosome 16 spans about 30 kb and includes seven loci: 5'- zeta - pseudozeta - mu - pseudoalpha-1 - alpha-2 - alpha-1 - theta - 3'. The alpha-2 (HBA2) and alpha-1 (HBA1) coding sequences are identical. These genes differ slightly over the 5' untranslated regions and the introns, but they differ significantly over the 3' untranslated regions. Two alpha chains plus two beta chains constitute HbA, which in normal adult life comprises about 97% of the total hemoglobin; alpha chains combine with delta chains to constitute HbA-2, which with HbF (fetal hemoglobin) makes up the remaining 3% of adult hemoglobin. Alpha thalassemias result from deletions of each of the alpha genes as well as deletions of both HBA2 and HBA1; some nondeletion alpha thalassemias have also been reported. [provided by RefSeq]

Other Designations alpha 2 globin|alpha globin|alpha-2 globin

Disease

- [alpha-Thalassemia](#)
- [beta-Thalassemia](#)
- [Pregnancy Complications](#)
- [Thalassemia](#)