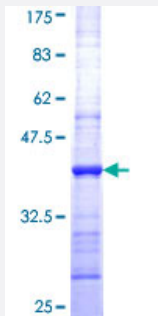


GZMM (Human) Recombinant Protein (Q01)

Catalog # H00003004-Q01

Size 25 ug, 10 ug

Applications



Specification

Product Description	Human GZMM partial ORF (NP_005308, 85 a.a. - 193 a.a.) recombinant protein with GST-tag at N-terminal.
Sequence	DSPGLTFHIKAAIQHPRYKVPVPALENDLALLQLDGKVKPSRTIRPLALPSKRQVVAAGTRCSMAG WGLTHQGGRLSRVLRELDLQVLDTRMCNNSRFWNGSLSPSMVCL
Host	Wheat Germ (in vitro)
Theoretical MW (kDa)	37.73
Interspecies Antigen Sequence	Mouse (64); Rat (66)
Preparation Method	in vitro wheat germ expression system
Purification	Glutathione Sepharose 4 Fast Flow
Quality Control Testing	12.5% SDS-PAGE Stained with Coomassie Blue.
Storage Buffer	50 mM Tris-HCl, 10 mM reduced Glutathione, pH=8.0 in the elution buffer.
Storage Instruction	Store at -80°C. Aliquot to avoid repeated freezing and thawing.
Note	Best use within three months from the date of receipt of this protein.

Applications

- Enzyme-linked Immunoabsorbent Assay
- Western Blot (Recombinant protein)
- Antibody Production
- Protein Array

Gene Info — GZMM

Entrez GeneID	3004
GeneBank Accession#	NM_005317
Protein Accession#	NP_005308
Gene Name	GZMM
Gene Alias	LMET1, MET1
Gene Description	granzyme M (lymphocyte met-ase 1)
Omim ID	600311
Gene Ontology	Hyperlink
Gene Summary	Human natural killer (NK) cells and activated lymphocytes express and store a distinct subset of neutral serine proteases together with proteoglycans and other immune effector molecules in large cytoplasmic granules. These serine proteases are collectively termed granzymes and include 4 distinct gene products: granzyme A, granzyme B, granzyme H, and Met-ase, also known as granzyme M. [provided by RefSeq]
Other Designations	granzyme M lymphocyte met-ase 1