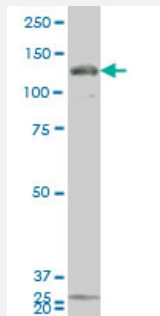


GUCY2C monoclonal antibody (M02), clone 1B11

Catalog # H00002984-M02

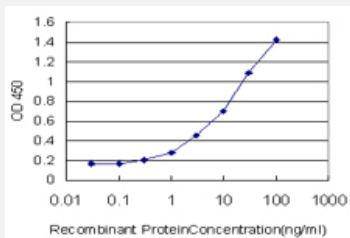
Size 100 ug

Applications



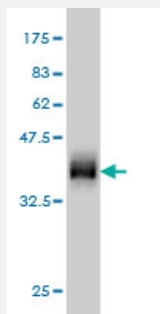
Western Blot (Cell lysate)

GUCY2C monoclonal antibody (M02), clone 1B11 Western Blot analysis of GUCY2C expression in 293 (Cat # L026V1).



Sandwich ELISA (Recombinant protein)

Detection limit for recombinant GST tagged GUCY2C is approximately 0.3ng/ml as a capture antibody.



Western Blot detection against Immunogen (37.73 KDa) .

Specification

Product Description

Mouse monoclonal antibody raised against a partial recombinant GUCY2C.

Immunogen	GUCY2C (NP_004954, 24 a.a. ~ 133 a.a) partial recombinant protein with GST tag. MW of the GST tag alone is 26 KDa.
Sequence	SQVSNCHNGSYEISVLMMGNSAFAEPLKNLEDAVNEGLEIVRGRLQNAGLNVTVNATFMYS DG LIHNSGDCRSSTCEGLDLLRKISNAQRMGCVLIGPSC TYSTFQMYL
Host	Mouse
Reactivity	Human
Interspecies Antigen Sequence	Mouse (77); Rat (79)
Isotype	IgG2b Kappa
Quality Control Testing	Antibody Reactive Against Recombinant Protein. Western Blot detection against Immunogen (37.73 KDa) .
Storage Buffer	In 1x PBS, pH 7.4
Storage Instruction	Store at -20°C or lower. Aliquot to avoid repeated freezing and thawing.

Applications

- Western Blot (Cell lysate)

GUCY2C monoclonal antibody (M02), clone 1B11 Western Blot analysis of GUCY2C expression in 293 (Cat # L026V1).

[Protocol Download](#)

- Western Blot (Recombinant protein)

[Protocol Download](#)

- Sandwich ELISA (Recombinant protein)

Detection limit for recombinant GST tagged GUCY2C is approximately 0.3ng/ml as a capture antibody.

[Protocol Download](#)

- ELISA

Gene Info — GUCY2C

Entrez GeneID [2984](#)

GeneBank Accession#	NM_004963.3
Protein Accession#	NP_004954
Gene Name	GUCY2C
Gene Alias	GUC2C, STAR
Gene Description	guanylate cyclase 2C (heat stable enterotoxin receptor)
Omim ID	601330
Gene Ontology	Hyperlink
Other Designations	guanylyl cyclase C

Pathway

- [Purine metabolism](#)