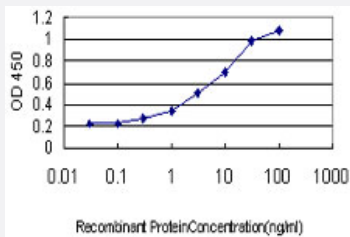


GUCY2C monoclonal antibody (M01), clone 2F3

Catalog # H00002984-M01

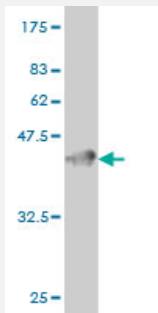
Size 100 ug

Applications



Sandwich ELISA (Recombinant protein)

Detection limit for recombinant GST tagged GUCY2C is approximately 0.3ng/ml as a capture antibody.



Western Blot detection against Immunogen (37.73 KDa) .

Specification

Product Description

Mouse monoclonal antibody raised against a partial recombinant GUCY2C.

Immunogen

GUCY2C (NP_004954, 24 a.a. ~ 133 a.a) partial recombinant protein with GST tag. MW of the GST tag alone is 26 KDa.

Sequence

SQVSQNCHNGSYEISVLMMGNSAFAEPLKNLEDAVNEGLEIVRGRLQNAGLNVTVNATFMYS DG
LIHNSGDCRSSSTCEGLDLLRKISNAQRMGCVLIGPSCITYSTFQMYL

Host

Mouse

Reactivity

Human

| | |
|-------------------------------|--|
| Interspecies Antigen Sequence | Mouse (77); Rat (79) |
| Isotype | IgG2b Kappa |
| Quality Control Testing | Antibody Reactive Against Recombinant Protein. Western Blot detection against Immunogen (37.73 KDa) . |
| Storage Buffer | In 1x PBS, pH 7.4 |
| Storage Instruction | Store at -20°C or lower. Aliquot to avoid repeated freezing and thawing. |

Applications

- Western Blot (Recombinant protein)

[Protocol Download](#)

- Sandwich ELISA (Recombinant protein)

Detection limit for recombinant GST tagged GUCY2C is approximately 0.3ng/ml as a capture antibody.

[Protocol Download](#)

- ELISA

Gene Info — GUCY2C

| | |
|---------------------|---|
| Entrez GeneID | 2984 |
| GeneBank Accession# | NM_004963.3 |
| Protein Accession# | NP_004954 |
| Gene Name | GUCY2C |
| Gene Alias | GUC2C, STAR |
| Gene Description | guanylate cyclase 2C (heat stable enterotoxin receptor) |
| Omim ID | 601330 |
| Gene Ontology | Hyperlink |
| Other Designations | guanylyl cyclase C |

Pathway

- [Purine metabolism](#)