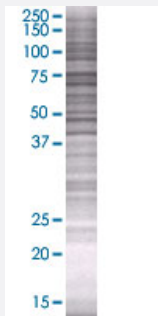


GUCY1A3 293T Cell Transient Overexpression Lysate(Denatured)

Catalog # H00002982-T01

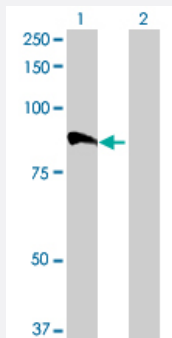
Size 100 uL

Applications



SDS-PAGE Gel

GUCY1A3 transfected lysate.



Western Blot

Lane 1: GUCY1A3 transfected lysate (76.01 KDa)

Lane 2: Non-transfected lysate.

Specification

Transfected Cell Line 293T

Plasmid pCMV-GUCY1A3 full-length

Host Human

Theoretical MW (kDa) 76.01

Quality Control Testing Transient overexpression cell lysate was tested with Anti-GUCY1A3 antibody ([H00002982-B01](#)) by Western Blots.
 SDS-PAGE Gel
 GUCY1A3 transfected lysate.
 Western Blot
 Lane 1: GUCY1A3 transfected lysate (76.01 KDa)
 Lane 2: Non-transfected lysate.

Storage Buffer	1X Sample Buffer (50 mM Tris-HCl, 2% SDS, 10% glycerol, 300 mM 2-mercaptoethanol, 0.01% Bromophenol blue)
Storage Instruction	Store at -80°C. Aliquot to avoid repeated freezing and thawing.

Applications

- Western Blot

Gene Info — GUCY1A3

Entrez GeneID	2982
GeneBank Accession#	BC028384
Protein Accession#	AAH28384
Gene Name	GUCY1A3
Gene Alias	GC-SA3, GUC1A3, GUCA3, GUCSA3, GUCY1A1
Gene Description	guanylate cyclase 1, soluble, alpha 3
Omim ID	139396
Gene Ontology	Hyperlink
Gene Summary	Soluble guanylate cyclase (sGC), a heterodimeric protein consisting of an alpha subunit, such as alpha-1 (GUCY1A3), and a beta subunit, typically beta-1 (GUCY1B3; MIM 139397), catalyzes conversion of GTP to the second messenger cGMP and functions as the main receptor for nitric oxide and nitrovasodilator drugs (Zabel et al., 1998 [PubMed 9742212]).[supplied by OMIM]
Other Designations	GC-S-alpha-1 soluble guanylate cyclase large subunit

Pathway

- [Gap junction](#)
- [Long-term depression](#)
- [Purine metabolism](#)
- [Vascular smooth muscle contraction](#)