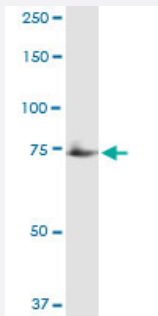


GUCY1A3 (Human) IP-WB Antibody Pair

Catalog # H00002982-PW1

Size 1 Set

Applications



Immunoprecipitation of GUCY1A3 transfected lysate using rabbit polyclonal anti-GUCY1A3 and Protein A Magnetic Bead ([U0007](#)), and immunoblotted with mouse purified polyclonal anti-GUCY1A3.

Specification

Product Description	This IP-WB antibody pair set comes with one antibody for immunoprecipitation and another to detect the precipitated protein in western blot.
Reactivity	Human
Quality Control Testing	Immunoprecipitation-Western Blot (IP-WB) Immunoprecipitation of GUCY1A3 transfected lysate using rabbit polyclonal anti-GUCY1A3 and Protein A Magnetic Bead (U0007), and immunoblotted with mouse purified polyclonal anti-GUCY1A3.
Supplied Product	Antibody pair set content: 1. Antibody pair for IP: rabbit polyclonal anti-GUCY1A3 (300 ul) 2. Antibody pair for WB: mouse purified polyclonal anti-GUCY1A3 (50 ug)
Storage Instruction	Store reagents of the antibody pair set at -20°C or lower. Please aliquot to avoid repeated freeze thaw cycle. Reagents should be returned to -20°C storage immediately after use.

Applications

- Immunoprecipitation-Western Blot

[Protocol Download](#)

Gene Info — GUCY1A3

Entrez GeneID	2982
Gene Name	GUCY1A3
Gene Alias	GC-SA3, GUC1A3, GUCA3, GUCSA3, GUCY1A1
Gene Description	guanylate cyclase 1, soluble, alpha 3
Omim ID	139396
Gene Ontology	Hyperlink
Gene Summary	Soluble guanylate cyclase (sGC), a heterodimeric protein consisting of an alpha subunit, such as alpha-1 (GUCY1A3), and a beta subunit, typically beta-1 (GUCY1B3; MIM 139397), catalyzes conversion of GTP to the second messenger cGMP and functions as the main receptor for nitric oxide and nitrovasodilator drugs (Zabel et al., 1998 [PubMed 9742212]).[supplied by OMIM]
Other Designations	GC-S-alpha-1 soluble guanylate cyclase large subunit

Pathway

- [Gap junction](#)
- [Long-term depression](#)
- [Purine metabolism](#)
- [Vascular smooth muscle contraction](#)