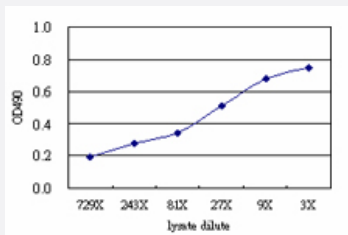


GTF3C2 (Human) Matched Antibody Pair

Catalog # H00002976-AP51

Size 1 Set

Applications



Sandwich ELISA detection sensitivity ranging from approximately 729x to 3x dilution of the GTF3C2 293T overexpression lysate (non-denatured).

Specification

Product Description	This antibody pair set comes with a matched antibody pair to detect and quantify the protein level of human GTF3C2.
Reactivity	Human
Quality Control Testing	Standard curve using GTF3C2 293T overexpression lysate (non-denatured) as an analyte. Sandwich ELISA detection sensitivity ranging from approximately 729x to 3x dilution of the GTF3C2 293T overexpression lysate (non-denatured).
Supplied Product	Antibody pair set content: 1. Capture antibody: mouse monoclonal anti-GTF3C2 (100 ug) 2. Detection antibody: rabbit purified polyclonal anti-GTF3C2 (50 ug) *Reagents are sufficient for at least 3-5 x 96 well plates using recommended protocols.
Storage Instruction	Store reagents of the antibody pair set at -20°C or lower. Please aliquot to avoid repeated freeze thaw cycle. Reagents should be returned to -20°C storage immediately after use.

Applications

- ELISA Pair (Transfected lysate)

[Protocol Download](#)

Gene Info — GTF3C2

Entrez GeneID [2976](#)**Gene Name** GTF3C2**Gene Alias** KIAA0011, TFIIIC-BETA, TFIIIC110**Gene Description** general transcription factor IIIC, polypeptide 2, beta 110kDa**Omim ID** [604883](#)**Gene Ontology** [Hyperlink](#)**Gene Summary** polypeptide 2**Other Designations** general transcription factor IIIC, polypeptide 2 (beta subunit, 110kD)