

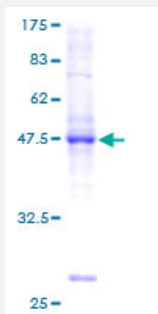
Full-Length

BRF1 (Human) Recombinant Protein (P01)

Catalog # H00002972-P01

Size 25 ug, 10 ug

Applications



Specification

Product Description

Human BRF1 full-length ORF (AAH16743, 1 a.a. - 208 a.a.) recombinant protein with GST-tag at N-terminal.

Sequence

MTGRVCRGCGGTDIELDAARGDTVCTACGSVLEDNIIMSEVQFVESSGGGSSAVGQFVSLDGAG
KPTLGGGFHVNLGKESRAQTLQNGRRHHHLGNQLQLNQHCLDTAFNFFKMAVSRHLTRGRKM
AHVIAACLYPVCRTGTPHMLLDLSDLLQVDSLRLPASFTWGCDLGVVTRVVTGVYPRCLHASQ
WPVCAACPVRKFWSVG

Host

Wheat Germ (in vitro)

Theoretical MW (kDa)

48.62

Preparation Method

[in vitro wheat germ expression system](#)

Purification

Glutathione Sepharose 4 Fast Flow

Quality Control Testing

12.5% SDS-PAGE Stained with Coomassie Blue.

Storage Buffer

50 mM Tris-HCl, 10 mM reduced Glutathione, pH=8.0 in the elution buffer.

Storage Instruction

Store at -80°C. Aliquot to avoid repeated freezing and thawing.

Note

Best use within three months from the date of receipt of this protein.

Applications

- Enzyme-linked Immunoabsorbent Assay
- Western Blot (Recombinant protein)
- Antibody Production
- Protein Array

Gene Info — BRF1

Entrez GeneID	2972
GeneBank Accession#	BC016743
Protein Accession#	AAH16743
Gene Name	BRF1
Gene Alias	BRF, FLJ42674, FLJ43034, GTF3B, MGC105048, TAF3B2, TAF3C, TAFIII90, TF3B90, TFIIIB90, hBRF
Gene Description	BRF1 homolog, subunit of RNA polymerase III transcription initiation factor IIIB (S. cerevisiae)
Omim ID	604902
Gene Ontology	Hyperlink
Gene Summary	This gene encodes one of the three subunits of the RNA polymerase III transcription factor complex. This complex plays a central role in transcription initiation by RNA polymerase III on genes encoding tRNA, 5S rRNA, and other small structural RNAs. The gene product belongs to the TF2B family. Two alternatively spliced variants encoding different isoforms, that function at different promoters transcribed by RNA polymerase III, have been identified. Other transcript variants are possible, but their full-length natures have not been completely characterized. [provided by RefSeq]
Other Designations	B - related factor 1 TATA box binding protein (TBP)-associated factor 3C TATA box binding protein (TBP)-associated factor, RNA polymerase III, GTF3B subunit 2 TATA box binding protein (TBP)-associated factor, RNA polymerase III, subunit 2 TBP - associated