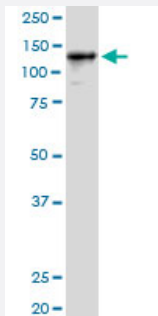


GTF2I (Human) IP-WB Antibody Pair

Catalog # H00002969-PW1

Size 1 Set

Applications



Immunoprecipitation of GTF2I transfected lysate using rabbit polyclonal anti-GTF2I and Protein A Magnetic Bead ([U0007](#)), and immunoblotted with mouse polyclonal anti-GTF2I.

Specification

Product Description	This IP-WB antibody pair set comes with one antibody for immunoprecipitation and another to detect the precipitated protein in western blot.
Reactivity	Human
Quality Control Testing	Immunoprecipitation-Western Blot (IP-WB) Immunoprecipitation of GTF2I transfected lysate using rabbit polyclonal anti-GTF2I and Protein A Magnetic Bead (U0007), and immunoblotted with mouse polyclonal anti-GTF2I.
Supplied Product	Antibody pair set content: 1. Antibody pair for IP: rabbit polyclonal anti-GTF2I (300 ul) 2. Antibody pair for WB: mouse polyclonal anti-GTF2I (50 ul)
Storage Instruction	Store reagents of the antibody pair set at -20°C or lower. Please aliquot to avoid repeated freeze thaw cycle. Reagents should be returned to -20°C storage immediately after use.

Applications

- Immunoprecipitation-Western Blot

[Protocol Download](#)

Gene Info — GTF2I

Entrez GeneID	2969
Gene Name	GTF2I
Gene Alias	BAP-135, BAP135, BTKAP1, DWS, FLJ38776, FLJ56355, IB291, SPIN, TFIH, WBS, WBSCR6
Gene Description	general transcription factor II, i
Omim ID	194050 601679
Gene Ontology	Hyperlink
Gene Summary	This gene encodes a multifunctional phosphoprotein with roles in transcription and signal transduction. It is deleted in Williams-Beuren syndrome, a multisystem developmental disorder caused by the deletion of contiguous genes at chromosome 7q11.23. Alternative splicing results in multiple transcript variants. Related pseudogenes have been identified on chromosomes 7, 13 and 21. [provided by RefSeq]
Other Designations	BTK-associated protein, 135kD Bruton tyrosine kinase-associated protein 135 Williams-Beuren syndrome chromosome region 6

Pathway

- [Basal transcription factors](#)