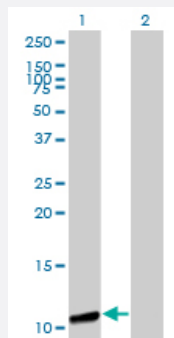


GTF2A2 monoclonal antibody (M01), clone 2B9

Catalog # H00002958-M01

Size 100 ug

Applications

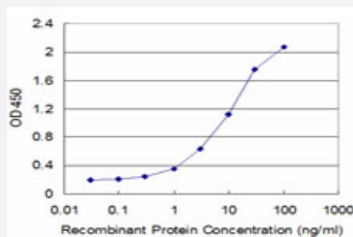


Western Blot (Transfected lysate)

Western Blot analysis of GTF2A2 expression in transfected 293T cell line by GTF2A2 monoclonal antibody (M01), clone 2B9.

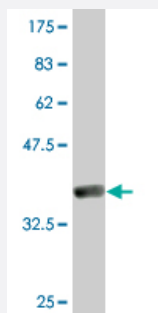
Lane 1: GTF2A2 transfected lysate (12.5 kDa).

Lane 2: Non-transfected lysate.



Sandwich ELISA (Recombinant protein)

Detection limit for recombinant GST tagged GTF2A2 is approximately 0.3 ng/ml as a capture antibody.



Western Blot detection against Immunogen (37.73 kDa).

Specification

Product Description

Mouse monoclonal antibody raised against a full-length recombinant GTF2A2.

Immunogen	GTF2A2 (AAH00287, 1 a.a. ~ 109 a.a) full-length recombinant protein with GST tag. MW of the GST tag alone is 26 KDa.
Sequence	MAYQLYRNTTLGNSLQESLDELIQSQQITPQLALQVLLQFDKAINAALAQRVRNVRVNFGRSLNTYRF CDNVWTFVLNDVEFREVTELIKVDKVKIVACDGKNTGSNTTE
Host	Mouse
Reactivity	Human
Isotype	IgG2a Kappa
Quality Control Testing	Antibody Reactive Against Recombinant Protein. Western Blot detection against Immunogen (37.73 KDa) .
Storage Buffer	In 1x PBS, pH 7.4
Storage Instruction	Store at -20°C or lower. Aliquot to avoid repeated freezing and thawing.

Applications

- Western Blot (Transfected lysate)

Western Blot analysis of GTF2A2 expression in transfected 293T cell line by GTF2A2 monoclonal antibody (M01), clone 2B9.

Lane 1: GTF2A2 transfected lysate(12.5 KDa).

Lane 2: Non-transfected lysate.

[Protocol Download](#)

- Western Blot (Recombinant protein)

[Protocol Download](#)

- Sandwich ELISA (Recombinant protein)

Detection limit for recombinant GST tagged GTF2A2 is approximately 0.3ng/ml as a capture antibody.

[Protocol Download](#)

- ELISA

Gene Info — GTF2A2

Entrez GeneID [2958](#)

GeneBank Accession# [BC000287](#)

Protein Accession#	AAH00287
Gene Name	GTF2A2
Gene Alias	HsT18745, TF2A2, TFIIA
Gene Description	general transcription factor IIA, 2, 12kDa
Omim ID	600519
Gene Ontology	Hyperlink
Gene Summary	<p>Accurate transcription initiation on TATA-containing class II genes involves the ordered assembly of RNA polymerase II (POLR2A; MIM 180660) and the general initiation factors TFIIA, TFIIIB (MIM 189963), TFIIID (MIM 313650), TFIIIE (MIM 189962), TFIIIF (MIM 189968), TFIIIG/TFIIJ, and TFIIH (MIM 189972). The first step involves recognition of the TATA element by the TATA-binding subunit (TBP; MIM 600075) and may be regulated by TFIIA, a factor that interacts with both TBP and a TBP-associated factor (TAF; MIM 600475) in TFIIID. TFIIA has 2 subunits (43 and 12 kD) in yeast and 3 subunits in higher eukaryotes. In HeLa extracts, it consists of a 35-kD alpha subunit and a 19-kD beta subunit encoded by the N- and C-terminal regions of GTF2A1 (MIM 600520), respectively, and a 12-kD gamma subunit encoded by GTF2A2 (DeJong et al., 1995 [PubMed 7724559]).[s applied by OMIM</p>
Other Designations	OTTHUMP00000196512 OTTHUMP00000196515 general transcription factor IIA, 2 (12kD subunit)

Pathway

- [Basal transcription factors](#)