

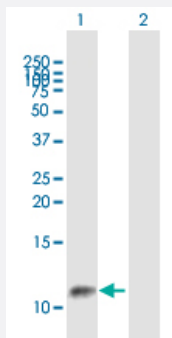
MaxPab®

## GTF2A2 purified MaxPab mouse polyclonal antibody (B02P)

Catalog # H00002958-B02P

Size 50 ug

### Applications

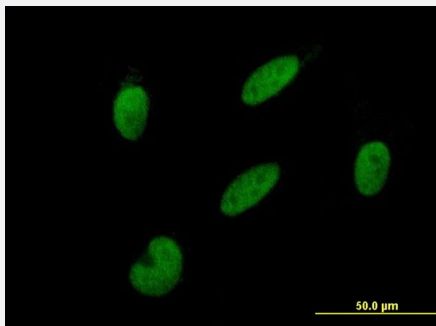


#### Western Blot (Transfected lysate)

Western Blot analysis of GTF2A2 expression in transfected 293T cell line ([H00002958-T02](#)) by GTF2A2 MaxPab polyclonal antibody.

Lane 1: GTF2A2 transfected lysate(11.99 KDa).

Lane 2: Non-transfected lysate.



#### Immunofluorescence

Immunofluorescence of purified MaxPab antibody to GTF2A2 on HepG2 cell. [antibody concentration 10 ug/ml]

### Specification

Product Description	Mouse polyclonal antibody raised against a full-length human GTF2A2 protein.
Immunogen	GTF2A2 (NP_004483.1, 1 a.a. ~ 109 a.a) full-length human protein.
Sequence	MAYQLYRNTTLGNSLQESLDELISQSQITPQLALQVLLQFDKAINAALAQRVRNVRNFRGSLNTYRF CDNVWTFVLNDVEFREVTELIKVDKVKIVACDGKNTGSNTTE
Host	Mouse
Reactivity	Human
Quality Control Testing	Antibody reactive against mammalian transfected lysate.

## Storage Buffer

In 1x PBS, pH 7.4

## Storage Instruction

Store at -20°C or lower. Aliquot to avoid repeated freezing and thawing.

## Applications

- Western Blot (Transfected lysate)

Western Blot analysis of GTF2A2 expression in transfected 293T cell line ([H00002958-T02](#)) by GTF2A2 MaxPab polyclonal antibody.

Lane 1: GTF2A2 transfected lysate(11.99 KDa).

Lane 2: Non-transfected lysate.

[Protocol Download](#)

- Immunofluorescence

Immunofluorescence of purified MaxPab antibody to GTF2A2 on HepG2 cell. [antibody concentration 10 ug/ml]

## Gene Info — GTF2A2

## Entrez GeneID

[2958](#)

## GeneBank Accession#

[NM\\_004492.1](#)

## Protein Accession#

[NP\\_004483.1](#)

## Gene Name

GTF2A2

## Gene Alias

HsT18745, TF2A2, TFIIA

## Gene Description

general transcription factor IIA, 2, 12kDa

## Omim ID

[600519](#)

## Gene Ontology

[Hyperlink](#)

## Gene Summary

Accurate transcription initiation on TATA-containing class II genes involves the ordered assembly of RNA polymerase II (POLR2A; MIM 180660) and the general initiation factors TFIIA, TFIIIB (MIM 189963), TFIIID (MIM 313650), TFIIIE (MIM 189962), TFIIIF (MIM 189968), TFIIIG/TFIIJ, and TFIIH (MIM 189972). The first step involves recognition of the TATA element by the TATA-binding subunit (TBP; MIM 600075) and may be regulated by TFIIA, a factor that interacts with both TBP and a TBP-associated factor (TAF; MIM 600475) in TFIIID. TFIIA has 2 subunits (43 and 12 kD) in yeast and 3 subunits in higher eukaryotes. In HeLa extracts, it consists of a 35-kD alpha subunit and a 19-kD beta subunit encoded by the N- and C-terminal regions of GTF2A1 (MIM 600520), respectively, and a 12-kD gamma subunit encoded by GTF2A2 (DeJong et al., 1995 [PubMed 7724559]).[s applied by OMIM

**Other Designations**

OTTHUMP00000196512|OTTHUMP00000196515|general transcription factor IIA, 2 (12kD subunit)

**Pathway**

- [Basal transcription factors](#)