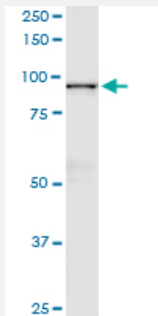


GSN (Human) IP-WB Antibody Pair

Catalog # H00002934-PW2

Size 1 Set

Applications



Immunoprecipitation of GSN transfected lysate using rabbit polyclonal anti-GSN and Protein A Magnetic Bead ([U0007](#)), and immunoblotted with mouse purified polyclonal anti-GSN.

Specification

Product Description	This IP-WB antibody pair set comes with one antibody for immunoprecipitation and another to detect the precipitated protein in western blot.
Reactivity	Human
Quality Control Testing	Immunoprecipitation-Western Blot (IP-WB) Immunoprecipitation of GSN transfected lysate using rabbit polyclonal anti-GSN and Protein A Magnetic Bead (U0007), and immunoblotted with mouse purified polyclonal anti-GSN.
Supplied Product	Antibody pair set content: 1. Antibody pair for IP: rabbit polyclonal anti-GSN (300 ul) 2. Antibody pair for WB: mouse purified polyclonal anti-GSN (50 ug)
Storage Instruction	Store reagents of the antibody pair set at -20°C or lower. Please aliquot to avoid repeated freeze thaw cycle. Reagents should be returned to -20°C storage immediately after use.

Applications

- Immunoprecipitation-Western Blot

[Protocol Download](#)

Gene Info — GSN

Entrez GeneID [2934](#)**Gene Name** GSN**Gene Alias** DKFZp313L0718**Gene Description** gelsolin (amyloidosis, Finnish type)**Omim ID** [105120](#) [137350](#)**Gene Ontology** [Hyperlink](#)

Gene Summary The protein encoded by this gene binds to the "plus" ends of actin monomers and filaments to prevent monomer exchange. The encoded calcium-regulated protein functions in both assembly and disassembly of actin filaments. Defects in this gene are a cause of familial amyloidosis Finnish type (FAF). Multiple transcript variants encoding several different isoforms have been found for this gene. [provided by RefSeq]

Other Designations OTTHUMP00000022011|OTTHUMP00000162202|gelsolin

Pathway

- [Fc gamma R-mediated phagocytosis](#)
- [Regulation of actin cytoskeleton](#)

Disease

- [Tobacco Use Disorder](#)