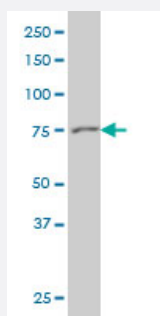


GSN monoclonal antibody (M01), clone 3G5

Catalog # H00002934-M01

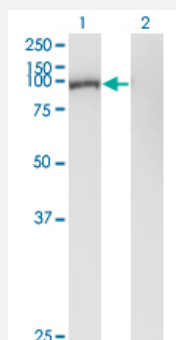
Size 100 ug

Applications



Western Blot (Cell lysate)

GSN monoclonal antibody (M01), clone 3G5 Western Blot analysis of GSN expression in HeLa (Cat # L013V1).

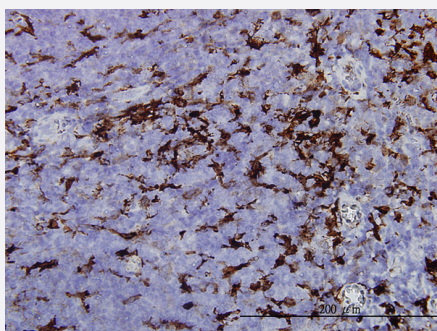


Western Blot (Transfected lysate)

Western Blot analysis of GSN expression in transfected 293T cell line by GSN monoclonal antibody (M01), clone 3G5.

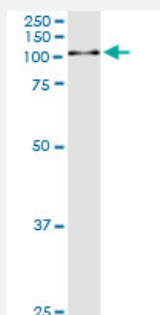
Lane 1: GSN transfected lysate(85.7 KDa).

Lane 2: Non-transfected lysate.



Immunohistochemistry (Formalin/PFA-fixed paraffin-embedded sections)

Immunoperoxidase of monoclonal antibody to GSN on formalin-fixed paraffin-embedded human tonsil. [antibody concentration 1 ug/ml]

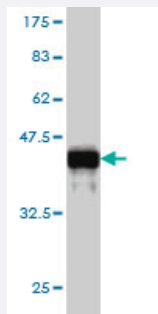
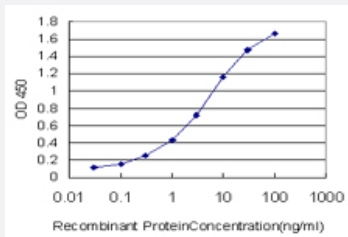


Immunoprecipitation

Immunoprecipitation of GSN transfected lysate using anti-GSN monoclonal antibody and Protein A Magnetic Bead, and immunoblotted with GSN MaxPab rabbit polyclonal antibody.

Sandwich ELISA (Recombinant protein)

Detection limit for recombinant GST tagged GSN is approximately 0.03ng/ml as a capture antibody.



Western Blot detection against Immunogen (37.84 KDa) .

Specification

Product Description	Mouse monoclonal antibody raised against a partial recombinant GSN.
Immunogen	GSN (AAH26033, 673 a.a. ~ 782 a.a) partial recombinant protein with GST tag. MW of the GST tag alone is 26 KDa.
Sequence	SNKIGRFVIEEVPGELMQEDLATDDVMLLDTWDQVFVWVGKDSQEEEEKTEALTSAKRYIETDPAN RDRRTPTITVVKQGFEPSPFVGWFLGWDDDDYWSVDPLDRAMAELAA
Host	Mouse
Reactivity	Human
Isotype	IgG1 Kappa
Quality Control Testing	Antibody Reactive Against Recombinant Protein. Western Blot detection against Immunogen (37.84 KDa) .
Storage Buffer	In 1x PBS, pH 7.4
Storage Instruction	Store at -20°C or lower. Aliquot to avoid repeated freezing and thawing.

Applications

- Western Blot (Cell lysate)

GSN monoclonal antibody (M01), clone 3G5 Western Blot analysis of GSN expression in HeLa (Cat # L013V1).

[Protocol Download](#)

- Western Blot (Transfected lysate)

Western Blot analysis of GSN expression in transfected 293T cell line by GSN monoclonal antibody (M01), clone 3G5.

Lane 1: GSN transfected lysate(85.7 KDa).

Lane 2: Non-transfected lysate.

[Protocol Download](#)

- Western Blot (Recombinant protein)

[Protocol Download](#)

- Immunohistochemistry (Formalin/PFA-fixed paraffin-embedded sections)

Immunoperoxidase of monoclonal antibody to GSN on formalin-fixed paraffin-embedded human tonsil. [antibody concentration 1 ug/ml]

[Protocol Download](#)

- Immunoprecipitation

Immunoprecipitation of GSN transfected lysate using anti-GSN monoclonal antibody and Protein A Magnetic Bead, and immunoblotted with GSN MaxPab rabbit polyclonal antibody.

[Protocol Download](#)

- Sandwich ELISA (Recombinant protein)

Detection limit for recombinant GST tagged GSN is approximately 0.03ng/ml as a capture antibody.

[Protocol Download](#)

- ELISA

Gene Info — GSN

Entrez GeneID	2934
---------------	----------------------

GeneBank Accession#	BC026033
---------------------	--------------------------

Protein Accession#	AAH26033
--------------------	--------------------------

Gene Name	GSN
Gene Alias	DKFZp313L0718
Gene Description	gelsolin (amyloidosis, Finnish type)
Omim ID	105120 137350
Gene Ontology	Hyperlink
Gene Summary	The protein encoded by this gene binds to the "plus" ends of actin monomers and filaments to prevent monomer exchange. The encoded calcium-regulated protein functions in both assembly and disassembly of actin filaments. Defects in this gene are a cause of familial amyloidosis Finnish type (FAF). Multiple transcript variants encoding several different isoforms have been found for this gene. [provided by RefSeq]
Other Designations	OTTHUMP00000022011 OTTHUMP00000162202 gelsolin

Publication Reference

- [The effects of plasma gelsolin on human erythroblast maturation for erythrocyte production.](#)

Han SY, Lee EM, Choi HS, Chun BH, Baek EJ.

Stem Cell Research 2018 May; 29:64.

Application: S-ELISA, Human, Supernatants

Pathway

- [Fc gamma R-mediated phagocytosis](#)
- [Regulation of actin cytoskeleton](#)

Disease

- [Tobacco Use Disorder](#)