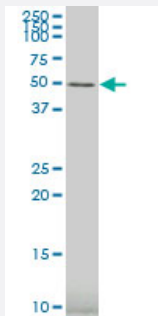


GRSF1 polyclonal antibody (A01)

Catalog # H00002926-A01

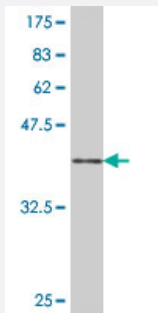
Size 50 uL

Applications



Western Blot (Cell lysate)

GRSF1 polyclonal antibody (A01), Lot # 060118JC01 Western Blot analysis of GRSF1 expression in 293 (Cat # L026V1).



Western Blot detection against Immunogen (36.89 KDa) .

Specification

Product Description	Mouse polyclonal antibody raised against a partial recombinant GRSF1.
Immunogen	GRSF1 (NP_002083, 87 a.a. ~ 184 a.a) partial recombinant protein with GST tag.
Sequence	EEEVDDVFLIRAQGLPWSCTMEDVLNFFSDCRIRNGENGIHFLLNRDGKRRGDALIEMESEQDVQ KALEKHRMYMGQRYVEVYEINNEDVDALMKSLQ
Host	Mouse
Reactivity	Human
Interspecies Antigen Sequence	Mouse (96); Rat (96)

Quality Control Testing

Antibody Reactive Against Recombinant Protein.
Western Blot detection against Immunogen (36.89 KDa) .

Storage Buffer

50 % glycerol

Storage Instruction

Store at -20°C or lower. Aliquot to avoid repeated freezing and thawing.

Applications

- Western Blot (Cell lysate)

GRSF1 polyclonal antibody (A01), Lot # 060118JC01 Western Blot analysis of GRSF1 expression in 293 (Cat # L026V1).

[Protocol Download](#)

- Western Blot (Recombinant protein)

[Protocol Download](#)

- ELISA

Gene Info — GRSF1

Entrez GeneID

[2926](#)

GeneBank Accession#

[NM_002092](#)

Protein Accession#

[NP_002083](#)

Gene Name

GRSF1

Gene Alias

FLJ13125

Gene Description

G-rich RNA sequence binding factor 1

Omim ID

[604851](#)

Gene Ontology

[Hyperlink](#)

Gene Summary

The protein encoded by this gene is a cellular protein that binds RNAs containing the G-rich element. The protein is localized in the cytoplasm, and has been shown to stimulate translation of viral mRNAs in vitro. Multiple transcript variants encoding different isoforms have been found for this gene. [provided by RefSeq]

Other Designations

-