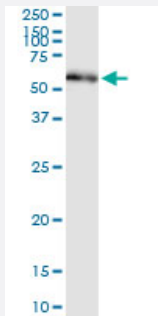


PDIA3 (Human) IP-WB Antibody Pair

Catalog # H00002923-PW1

Size 1 Set

Applications



Immunoprecipitation of PDIA3 transfected lysate using rabbit polyclonal anti-PDIA3 and Protein A Magnetic Bead ([U0007](#)), and immunoblotted with mouse purified polyclonal anti-PDIA3.

Specification

Product Description	This IP-WB antibody pair set comes with one antibody for immunoprecipitation and another to detect the precipitated protein in western blot.
Reactivity	Human
Interspecies Antigen Sequence	Mouse (93%); Rat (92%)
Quality Control Testing	Immunoprecipitation-Western Blot (IP-WB) Immunoprecipitation of PDIA3 transfected lysate using rabbit polyclonal anti-PDIA3 and Protein A Magnetic Bead (U0007), and immunoblotted with mouse purified polyclonal anti-PDIA3.
Supplied Product	Antibody pair set content: 1. Antibody pair for IP: rabbit polyclonal anti-PDIA3 (300 ul) 2. Antibody pair for WB: mouse purified polyclonal anti-PDIA3 (50 ug)
Storage Instruction	Store reagents of the antibody pair set at -20°C or lower. Please aliquot to avoid repeated freeze thaw cycle. Reagents should be returned to -20°C storage immediately after use.

Applications

- Immunoprecipitation-Western Blot

[Protocol Download](#)

Gene Info — PDIA3

Entrez GeneID	2923
Gene Name	PDIA3
Gene Alias	ER60, ERp57, ERp60, ERp61, GRP57, GRP58, HsT17083, P58, PI-PLC
Gene Description	protein disulfide isomerase family A, member 3
Omim ID	602046
Gene Ontology	Hyperlink
Gene Summary	This gene encodes a protein of the endoplasmic reticulum that interacts with lectin chaperones calreticulin and calnexin to modulate folding of newly synthesized glycoproteins. The protein was once thought to be a phospholipase; however, it has been demonstrated that the protein actually has protein disulfide isomerase activity. It is thought that complexes of lectins and this protein mediate protein folding by promoting formation of disulfide bonds in their glycoprotein substrates. [provided by RefSeq]
Other Designations	58 kDa microsomal protein OTTHUMP00000041709 endoplasmic reticulum P58 glucose regulated protein, 58kDa phospholipase C-alpha protein disulfide isomerase-associated 3 protein disulfide-isomerase A3

Pathway

- [Antigen processing and presentation](#)

Disease

- [Genetic Predisposition to Disease](#)
- [Prostatic Neoplasms](#)