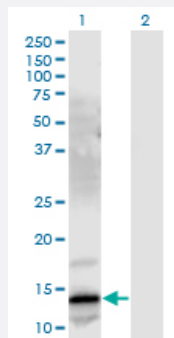


GRP monoclonal antibody (M03), clone 3A11

Catalog # H00002922-M03

Size 100 ug

Applications

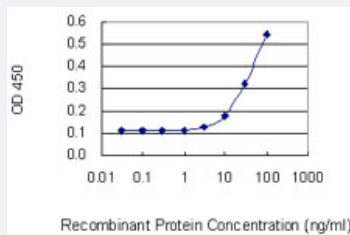


Western Blot (Transfected lysate)

Western Blot analysis of GRP expression in transfected 293T cell line by GRP monoclonal antibody (M03), clone 3A11.

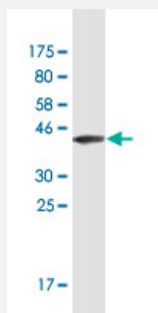
Lane 1: GRP transfected lysate (16.39 KDa).

Lane 2: Non-transfected lysate.



Sandwich ELISA (Recombinant protein)

Detection limit for recombinant GST tagged GRP is 3 ng/ml as a capture antibody.



Western Blot detection against Immunogen (42.02 KDa).

Specification

Product Description

Mouse monoclonal antibody raised against a full-length recombinant GRP.

Immunogen	GRP (AAH04488, 1 a.a. ~ 148 a.a) full-length recombinant protein with GST tag. MW of the GST tag alone is 26 KDa.
Sequence	MRGRELPLVLLALVLC LAPRGRAVPLPAGGGTVLTKMYPRGNHWAVGHLMGKKSTGESSVSE RGS LKQQLREYIRWEEAARNLLGLIEAKENRNHQPPQPKALGNQQPSWDSSEDSSNFKDVGSKG KVGRLSAPGSQREG RNPQLNQQ
Host	Mouse
Reactivity	Human
Interspecies Antigen Sequence	Mouse (64); Rat (68)
Isotype	IgG2b Kappa
Quality Control Testing	Antibody Reactive Against Recombinant Protein. Western Blot detection against Immunogen (42.02 KDa) .
Storage Buffer	In 1x PBS, pH 7.4
Storage Instruction	Store at -20°C or lower. Aliquot to avoid repeated freezing and thawing.

Applications

- Western Blot (Transfected lysate)

Western Blot analysis of GRP expression in transfected 293T cell line by GRP monoclonal antibody (M03), clone 3A11.

Lane 1: GRP transfected lysate(16.39 KDa).

Lane 2: Non-transfected lysate.

[Protocol Download](#)

- Western Blot (Recombinant protein)

[Protocol Download](#)

- Sandwich ELISA (Recombinant protein)

Detection limit for recombinant GST tagged GRP is 3 ng/ml as a capture antibody.

[Protocol Download](#)

- ELISA

Gene Info — GRP

Entrez GeneID	2922
GeneBank Accession#	BC004488
Protein Accession#	AAH04488
Gene Name	GRP
Gene Alias	BN, GRP-10, preproGRP, proGRP
Gene Description	gastrin-releasing peptide
Omim ID	137260
Gene Ontology	Hyperlink
Gene Summary	<p>This gene encodes a member of the bombesin-like family of gastrin-releasing peptides. Its prepro protein, following cleavage of a signal peptide, is further processed to produce either the 27 aa gastrin-releasing peptide or the 10 aa neuromedin C. These smaller peptides regulate numerous functions of the gastrointestinal and central nervous systems, including release of gastrointestinal hormones, smooth muscle cell contraction, and epithelial cell proliferation. These peptides are also likely to play a role in human cancers of the lung, colon, stomach, pancreas, breast, and prostate. Alternative splicing results in multiple transcript variants encoding different isoforms. [provided by RefSeq]</p>
Other Designations	bombesin neuromedin C pre-progastrin releasing peptide

Pathway

- [Neuroactive ligand-receptor interaction](#)

Disease

- [Anorexia Nervosa](#)
- [Bulimia](#)
- [Genetic Predisposition to Disease](#)
- [Mental Disorders](#)
- [Panic Disorder](#)