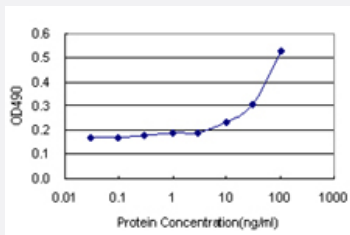


CXCL1 (Human) Matched Antibody Pair

Catalog # H00002919-AP11

Size 1 Set

Applications



Sandwich ELISA detection sensitivity ranging from 3 ng/ml to 100 ng/ml.

Specification

Product Description	This antibody pair set comes with a matched antibody pair to detect and quantify the protein level of human CXCL1.
Reactivity	Human
Quality Control Testing	Standard curve using recombinant protein (H00002919-P01) as an analyte. Sandwich ELISA detection sensitivity ranging from 3 ng/ml to 100 ng/ml.
Supplied Product	Antibody pair set content: 1. Capture antibody: rabbit MaxPab® affinity purified polyclonal anti-CXCL1 (100 ug) 2. Detection antibody: mouse monoclonal anti-CXCL1, IgG2a Kappa (20 ug) *Reagents are sufficient for at least 1-2 x 96 well plates using recommended protocols.
Storage Instruction	Store reagents of the antibody pair set at -20°C or lower. Please aliquot to avoid repeated freeze thaw cycle. Reagents should be returned to -20°C storage immediately after use.

Applications

- ELISA Pair (Recombinant protein)

[Protocol Download](#)

Gene Info — CXCL1

Entrez GeneID	2919
Gene Name	CXCL1
Gene Alias	FSP, GRO1, GROa, MGSA, MGSA-a, NAP-3, SCYB1
Gene Description	chemokine (C-X-C motif) ligand 1 (melanoma growth stimulating activity, alpha)
Omim ID	155730
Gene Ontology	Hyperlink
Gene Summary	Chemokines are a group of small (approximately 8 to 14 kD), mostly basic, structurally related molecules that regulate cell trafficking of various types of leukocytes through interactions with a subset of 7-transmembrane, G protein-coupled receptors. Chemokines also play fundamental roles in the development, homeostasis, and function of the immune system, and they have effects on cells of the central nervous system as well as on endothelial cells involved in angiogenesis or angiostasis. Chemokines are divided into 2 major subfamilies, CXC and CC, based on the arrangement of the first 2 of the 4 conserved cysteine residues; the 2 cysteines are separated by a single amino acid in CXC chemokines and are adjacent in CC chemokines. CXC chemokines are further subdivided into ELR and non-ELR types based on the presence or absence of a glu-leu-arg sequence adjacent and N terminal to the CXC motif. ELR types are chemotactic for neutrophils, while non-ELR types are chemotactic for lymphocytes.[supplied by OMIM]
Other Designations	GRO1 oncogene (melanoma growth stimulating activity, alpha) GRO1 oncogene (melanoma growth-stimulating activity) MGSA alpha chemokine (C-X-C motif) ligand 1 fibroblast secretory protein melanoma growth stimulatory activity alpha

Pathway

- [Chemokine signaling pathway](#)
- [Cytokine-cytokine receptor interaction](#)
- [Epithelial cell signaling in Helicobacter pylori infection](#)

Disease

- [Alzheimer disease](#)
- [Asthma](#)
- [Bronchiolitis](#)
- [Genetic Predisposition to Disease](#)

- [Infant](#)
- [Ovarian Neoplasms](#)
- [Respiratory Syncytial Virus Infections](#)