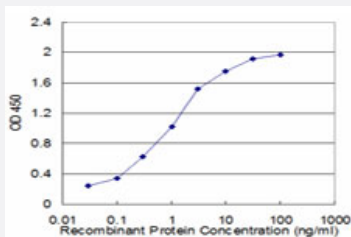


GRM5 monoclonal antibody (M01), clone 1B3

Catalog # H00002915-M01

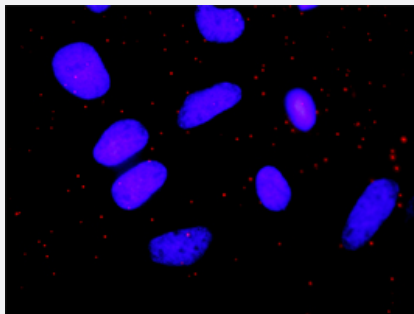
Size 100 ug

Applications



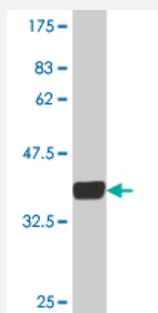
Sandwich ELISA (Recombinant protein)

Detection limit for recombinant GST tagged GRM5 is approximately 0.03ng/ml as a capture antibody.



In situ Proximity Ligation Assay (Cell)

Proximity Ligation Analysis of protein-protein interactions between PRKCD and GRM5. HeLa cells were stained with anti-PRKCD rabbit purified polyclonal 1:1200 and anti-GRM5 mouse monoclonal antibody 1:50. Each red dot represents the detection of protein-protein interaction complex, and nuclei were counterstained with DAPI (blue).



Western Blot detection against Immunogen (36.74 KDa) .

Specification

Product Description

Mouse monoclonal antibody raised against a partial recombinant GRM5.

Immunogen	GRM5 (NP_000833, 419 a.a. ~ 518 a.a) partial recombinant protein with GST tag. MW of the GST tag alone is 26 KDa.
Sequence	CPGYAGLCDAMKPIDGRKLLLESLMKTNFTGVSGDTILFDENGDSPGRYEIMNFKEMGKDYFDYINV GSWDNGELKMDDDEVWSKKSNIIRSVCEPCEKG
Host	Mouse
Reactivity	Human
Interspecies Antigen Sequence	Mouse (97); Rat (97)
Isotype	IgG2a Kappa
Quality Control Testing	Antibody Reactive Against Recombinant Protein. Western Blot detection against Immunogen (36.74 KDa) .
Storage Buffer	In 1x PBS, pH 7.4
Storage Instruction	Store at -20°C or lower. Aliquot to avoid repeated freezing and thawing.

Applications

- Western Blot (Recombinant protein)

[Protocol Download](#)

- Sandwich ELISA (Recombinant protein)

Detection limit for recombinant GST tagged GRM5 is approximately 0.03ng/ml as a capture antibody.

[Protocol Download](#)

- ELISA

- In situ* Proximity Ligation Assay (Cell)

Proximity Ligation Analysis of protein-protein interactions between PRKCD and GRM5. HeLa cells were stained with anti-PRKCD rabbit purified polyclonal 1:1200 and anti-GRM5 mouse monoclonal antibody 1:50. Each red dot represents the detection of protein-protein interaction complex, and nuclei were counterstained with DAPI (blue).

Gene Info — GRM5

Entrez GeneID [2915](#)

GeneBank Accession#	NM_000842
Protein Accession#	NP_000833
Gene Name	GRM5
Gene Alias	GPRC1E, MGLUR5, mGlu5
Gene Description	glutamate receptor, metabotropic 5
Omim ID	604102
Gene Ontology	Hyperlink
Gene Summary	<p>L-glutamate is the major excitatory neurotransmitter in the central nervous system and activates both ionotropic and metabotropic glutamate receptors. Glutamatergic neurotransmission is involved in most aspects of normal brain function and can be perturbed in many neuropathologic conditions. The metabotropic glutamate receptors are a family of G protein-coupled receptors, that have been divided into 3 groups on the basis of sequence homology, putative signal transduction mechanisms, and pharmacologic properties. Group I includes GRM1 and GRM5 and these receptors have been shown to activate phospholipase C. Group II includes GRM2 and GRM3 while Group III includes GRM4, GRM6, GRM7 and GRM8. Group II and III receptors are linked to the inhibition of the cyclic AMP cascade but differ in their agonist selectivities. Multiple transcript variants encoding different isoforms have been found for this gene. [provided by RefSeq]</p>
Other Designations	-

Pathway

- [Calcium signaling pathway](#)
- [Gap junction](#)
- [Long-term depression](#)
- [Long-term potentiation](#)
- [Neuroactive ligand-receptor interaction](#)

Disease

- [Alcoholism](#)
- [Anorexia Nervosa](#)
- [Bulimia](#)

- [Cardiovascular Diseases](#)
- [Cognition](#)
- [Diabetes Mellitus](#)
- [Edema](#)
- [Genetic Predisposition to Disease](#)
- [Mental Disorders](#)
- [Schizophrenia](#)
- [Schizophrenic Psychology](#)
- [Tobacco Use Disorder](#)
- [Weight Gain](#)