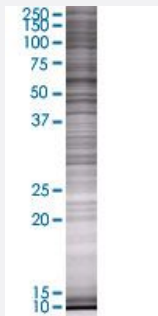


# GRB10 293T Cell Transient Overexpression Lysate(Denatured)

Catalog # H00002887-T02

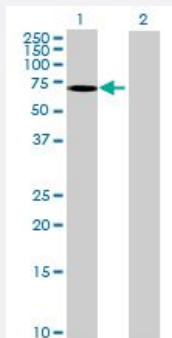
Size 100 uL

## Applications



### SDS-PAGE Gel

GRB10 transfected lysate.



### Western Blot

Lane 1: GRB10 transfected lysate ( 59.07 KDa)

Lane 2: Non-transfected lysate.

## Specification

**Transfected Cell Line** 293T

**Plasmid** pCMV-GRB10 full-length

**Host** Human

**Theoretical MW (kDa)** 59.07

**Quality Control Testing** Transient overexpression cell lysate was tested with Anti-GRB10 antibody ([H00002887-B02](#)) by Western Blots.  
 SDS-PAGE Gel  
 GRB10 transfected lysate.  
 Western Blot  
 Lane 1: GRB10 transfected lysate ( 59.07 KDa)  
 Lane 2: Non-transfected lysate.

**Storage Buffer**

1X Sample Buffer (50 mM Tris-HCl, 2% SDS, 10% glycerol, 300 mM 2-mercaptoethanol, 0.01% Bromophenol blue)

**Storage Instruction**

Store at -80°C. Aliquot to avoid repeated freezing and thawing.

## Applications

- Western Blot

## Gene Info — GRB10

**Entrez GeneID**[2887](#)**GeneBank Accession#**[NM\\_001001550](#)**Protein Accession#**[NP\\_001001550](#)**Gene Name**

GRB10

**Gene Alias**

GRB-IR, Grb-10, IRBP, KIAA0207, MEG1, RSS

**Gene Description**

growth factor receptor-bound protein 10

**Omim ID**[601523](#)**Gene Ontology**[Hyperlink](#)**Gene Summary**

The product of this gene belongs to a small family of adapter proteins that are known to interact with a number of receptor tyrosine kinases and signaling molecules. This gene encodes a growth factor receptor-binding protein that interacts with insulin receptors and insulin-like growth-factor receptors. Overexpression of some isoforms of the encoded protein inhibits tyrosine kinase activity and results in growth suppression. This gene is imprinted in a highly isoform- and tissue-specific manner. Alternatively spliced transcript variants encoding different isoforms have been identified. [provided by RefSeq]

**Other Designations**

GRB10 adaptor protein|insulin receptor-binding protein Grb-IR|maternally expressed gene 1

## Disease

- [Birth Weight](#)
- [Diabetes Mellitus](#)
- [Overweight](#)