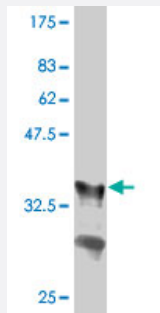


GRB10 polyclonal antibody (A01)

Catalog # H00002887-A01

Size 50 uL

Applications



Western Blot detection against Immunogen (36.01 KDa) .

Specification

Product Description	Mouse polyclonal antibody raised against a partial recombinant GRB10.
Immunogen	GRB10 (AAH24285, 61 a.a. ~ 150 a.a) partial recombinant protein with GST tag.
Sequence	AVRRLQEEDQQFRTSSLPAIPNPFPELCGPGSPVLTGSLPPSQAAAKQDVKVFSEDGTSKVV EILADMTARDLCQLLVYKSHCVDDNS
Host	Mouse
Reactivity	Human
Quality Control Testing	Antibody Reactive Against Recombinant Protein. Western Blot detection against Immunogen (36.01 KDa) .
Storage Buffer	50 % glycerol
Storage Instruction	Store at -20°C or lower. Aliquot to avoid repeated freezing and thawing.

Applications

- Western Blot (Recombinant protein)

[Protocol Download](#)

- ELISA

Gene Info — GRB10

Entrez GeneID [2887](#)

GeneBank Accession# [BC024285](#)

Protein Accession# [AAH24285](#)

Gene Name GRB10

Gene Alias GRB-IR, Grb-10, IRBP, KIAA0207, MEG1, RSS

Gene Description growth factor receptor-bound protein 10

Omim ID [601523](#)

Gene Ontology [Hyperlink](#)

Gene Summary The product of this gene belongs to a small family of adapter proteins that are known to interact with a number of receptor tyrosine kinases and signaling molecules. This gene encodes a growth factor receptor-binding protein that interacts with insulin receptors and insulin-like growth-factor receptors. Overexpression of some isoforms of the encoded protein inhibits tyrosine kinase activity and results in growth suppression. This gene is imprinted in a highly isoform- and tissue-specific manner. Alternatively spliced transcript variants encoding different isoforms have been identified. [provided by RefSeq]

Other Designations GRB10 adaptor protein|insulin receptor-binding protein Grb-IR|maternally expressed gene 1

Disease

- [Birth Weight](#)
- [Diabetes Mellitus](#)
- [Overweight](#)