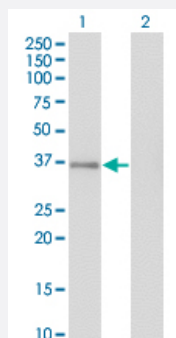


# GPS2 monoclonal antibody (M01), clone 3C4

Catalog # H00002874-M01

Size 100 ug

## Applications

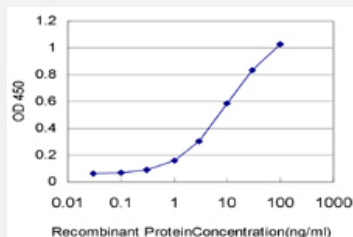


### Western Blot (Transfected lysate)

Western Blot analysis of GPS2 expression in transfected 293T cell line by GPS2 monoclonal antibody (M01), clone 3C4.

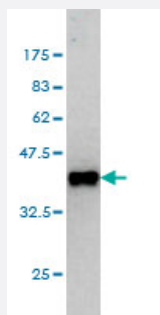
Lane 1: GPS2 transfected lysate (Predicted MW: 36.7 KDa).

Lane 2: Non-transfected lysate.



### Sandwich ELISA (Recombinant protein)

Detection limit for recombinant GST tagged GPS2 is approximately 0.3ng/ml as a capture antibody.



Western Blot detection against Immunogen (36.63 KDa) .

## Specification

### Product Description

Mouse monoclonal antibody raised against a partial recombinant GPS2.

<b>Immunogen</b>	GPS2 (AAH13652, 228 a.a. ~ 327 a.a) partial recombinant protein with GST tag. MW of the GST tag alone is 26 KDa.
<b>Sequence</b>	QPYAVHGHFQPTQTGFLQPGGALSLQKQMEHANQQTGFS DSSSLRPMHPQALHPAPGLLASPQ LPVQMMPAGKSGFAATSQPGPRLPFIQHSQNPRFYHK
<b>Host</b>	Mouse
<b>Reactivity</b>	Human
<b>Interspecies Antigen Sequence</b>	Mouse (94); Rat (95)
<b>Isotype</b>	IgG1 Kappa
<b>Quality Control Testing</b>	Antibody Reactive Against Recombinant Protein. Western Blot detection against Immunogen (36.63 KDa) .
<b>Storage Buffer</b>	In 1x PBS, pH 7.4
<b>Storage Instruction</b>	Store at -20°C or lower. Aliquot to avoid repeated freezing and thawing.

## Applications

- Western Blot (Transfected lysate)

Western Blot analysis of GPS2 expression in transfected 293T cell line by GPS2 monoclonal antibody (M01), clone 3C4.

Lane 1: GPS2 transfected lysate (Predicted MW: 36.7 KDa).

Lane 2: Non-transfected lysate.

[Protocol Download](#)

- Western Blot (Recombinant protein)

[Protocol Download](#)

- Sandwich ELISA (Recombinant protein)

Detection limit for recombinant GST tagged GPS2 is approximately 0.3ng/ml as a capture antibody.

[Protocol Download](#)

- ELISA

## Gene Info — GPS2

Entrez GeneID	<a href="#">2874</a>
GeneBank Accession#	<a href="#">BC013652</a>
Protein Accession#	<a href="#">AAH13652</a>
Gene Name	GPS2
Gene Alias	AMF-1, MGC104294, MGC119287, MGC119288, MGC119289
Gene Description	G protein pathway suppressor 2
Omim ID	<a href="#">601935</a>
Gene Ontology	<a href="#">Hyperlink</a>
Gene Summary	This gene encodes a protein involved in G protein-mitogen-activated protein kinase (MAPK) signaling cascades. When overexpressed in mammalian cells, this gene could potentially suppress a RAS- and MAPK-mediated signal and interfere with JNK activity, suggesting that the function of this gene may be signal repression. The encoded protein is an integral subunit of the NCOR1-HDAC3 (nuclear receptor corepressor 1-histone deacetylase 3) complex, and it was shown that the complex inhibits JNK activation through this subunit and thus could potentially provide an alternative mechanism for hormone-mediated antagonism of AP1 (activator protein 1) function. [provided by RefSeq]
Other Designations	OTTHUMP00000128385 OTTHUMP00000163158

## Publication Reference

- [Involvement of corepressor complex subunit GPS2 in transcriptional pathways governing human bile acid biosynthesis.](#)

Sanyal S, Bavner A, Haroniti A, Nilsson LM, Lundasen T, Rehnmark S, Witt MR, Einarsson C, Talianidis I, Gustafsson JA, Treuter E.

PNAS 2007 Sep; 104(40):15665.

Application: WB-Tr, Human, HepG2 cells