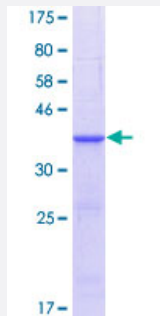


GPS1 (Human) Recombinant Protein (Q01)

Catalog # H00002873-Q01

Size 25 ug, 10 ug

Applications



Specification

Product Description	Human GPS1 partial ORF (AAH00155, 390 a.a. - 491 a.a.) recombinant protein with GST-tag at N-terminal.
Sequence	AAAFNTTVAALEDELTLILEGLISARVDSHSKILYARDVDQRSTTFEKSLLMGKEFQRRAKAMML RAAVLRNQIHVKSPPREGSQGELTPANSQSRMSTNM
Host	Wheat Germ (in vitro)
Theoretical MW (kDa)	36.85
Interspecies Antigen Sequence	Mouse (97); Rat (97)
Preparation Method	in vitro wheat germ expression system
Purification	Glutathione Sepharose 4 Fast Flow
Quality Control Testing	12.5% SDS-PAGE Stained with Coomassie Blue.
Storage Buffer	50 mM Tris-HCl, 10 mM reduced Glutathione, pH=8.0 in the elution buffer.
Storage Instruction	Store at -80°C. Aliquot to avoid repeated freezing and thawing.
Note	Best use within three months from the date of receipt of this protein.

Applications

- Enzyme-linked Immunoabsorbent Assay
- Western Blot (Recombinant protein)
- Antibody Production
- Protein Array

Gene Info — GPS1

Entrez GeneID [2873](#)

GeneBank Accession# [BC000155](#)

Protein Accession# [AAH00155](#)

Gene Name GPS1

Gene Alias COPS1, CSN1, MGC71287

Gene Description G protein pathway suppressor 1

Omim ID [601934](#)

Gene Ontology [Hyperlink](#)

Gene Summary This gene is known to suppress G-protein and mitogen-activated signal transduction in mammalian cells. The encoded protein shares significant similarity with Arabidopsis FUS6, which is a regulator of light-mediated signal transduction in plant cells. Two alternatively spliced transcript variants encoding different isoforms have been found for this gene. [provided by RefSeq]

Other Designations Arabidopsis FUS6/COP11 homolog