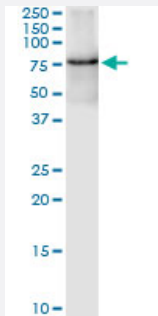


GRK6 (Human) IP-WB Antibody Pair

Catalog # H00002870-PW1

Size 1 Set

Applications



Immunoprecipitation of GRK6 transfected lysate using rabbit polyclonal anti-GRK6 and Protein A Magnetic Bead ([U0007](#)), and immunoblotted with mouse purified polyclonal anti-GRK6.

Specification

Product Description	This IP-WB antibody pair set comes with one antibody for immunoprecipitation and another to detect the precipitated protein in western blot.
Reactivity	Human
Quality Control Testing	Immunoprecipitation-Western Blot (IP-WB) Immunoprecipitation of GRK6 transfected lysate using rabbit polyclonal anti-GRK6 and Protein A Magnetic Bead (U0007), and immunoblotted with mouse purified polyclonal anti-GRK6.
Supplied Product	Antibody pair set content: 1. Antibody pair for IP: rabbit polyclonal anti-GRK6 (300 ul) 2. Antibody pair for WB: mouse purified polyclonal anti-GRK6 (50 ug)
Storage Instruction	Store reagents of the antibody pair set at -20°C or lower. Please aliquot to avoid repeated freeze thaw cycle. Reagents should be returned to -20°C storage immediately after use.

Applications

- Immunoprecipitation-Western Blot

[Protocol Download](#)

Gene Info — GRK6

Entrez GeneID [2870](#)

Gene Name GRK6

Gene Alias FLJ32135, GPRK6

Gene Description G protein-coupled receptor kinase 6

Omim ID [600869](#)

Gene Ontology [Hyperlink](#)

Gene Summary This gene encodes a member of the guanine nucleotide-binding protein (G protein)-coupled receptor kinase subfamily of the Ser/Thr protein kinase family. The protein phosphorylates the activated forms of G protein-coupled receptors thus initiating their deactivation. Several transcript variants encoding different isoforms have been described for this gene. [provided by RefSeq]

Other Designations -

Pathway

- [Chemokine signaling pathway](#)
- [Endocytosis](#)

Disease

- [Anorexia Nervosa](#)
- [Bulimia](#)
- [Cardiovascular Diseases](#)
- [Diabetes Mellitus](#)
- [Edema](#)
- [Genetic Predisposition to Disease](#)
- [Hyperparathyroidism](#)