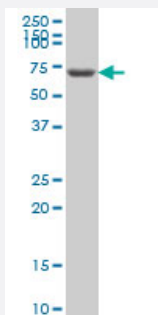


GRK6 monoclonal antibody (M05), clone 2C3

Catalog # H00002870-M05

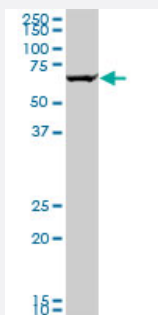
Size 100 ug

Applications



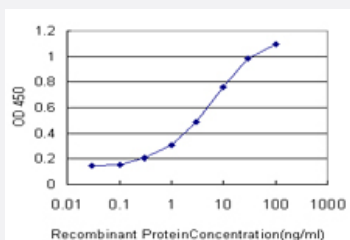
Western Blot (Cell lysate)

GRK6 monoclonal antibody (M05), clone 2C3 Western Blot analysis of GRK6 expression in Jurkat (Cat # L017V1).



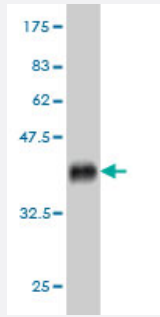
Western Blot (Cell lysate)

GRK6 monoclonal antibody (M05), clone 2C3. Western Blot analysis of GRK6 expression in HeLa (Cat # L013V1).



Sandwich ELISA (Recombinant protein)

Detection limit for recombinant GST tagged GRK6 is approximately 0.3ng/ml as a capture antibody.



Western Blot detection against Immunogen (36.63 KDa) .

Specification

Product Description	Mouse monoclonal antibody raised against a partial recombinant GRK6.
Immunogen	GRK6 (AAH17272, 71 a.a. ~ 170 a.a) partial recombinant protein with GST tag. MW of the GST tag alone is 26 KDa.
Sequence	CATRPELSRCVAFLDGVAEYEVTPDDKRKACGRQLTQNFLSHTGPDLIPEVPRQLVTNCTQRLE QGPKDLFQELTRLTHEYLSVAPFADYLDSEYFNRF
Host	Mouse
Reactivity	Human
Isotype	IgG2a Kappa
Quality Control Testing	Antibody Reactive Against Recombinant Protein. Western Blot detection against Immunogen (36.63 KDa) .
Storage Buffer	In 1x PBS, pH 7.4
Storage Instruction	Store at -20°C or lower. Aliquot to avoid repeated freezing and thawing.

Applications

- Western Blot (Cell lysate)

GRK6 monoclonal antibody (M05), clone 2C3 Western Blot analysis of GRK6 expression in Jurkat (Cat # L017V1).

[Protocol Download](#)

- Western Blot (Cell lysate)

GRK6 monoclonal antibody (M05), clone 2C3. Western Blot analysis of GRK6 expression in HeLa (Cat # L013V1).

[Protocol Download](#)

- Western Blot (Recombinant protein)

[Protocol Download](#)

- Sandwich ELISA (Recombinant protein)

Detection limit for recombinant GST tagged GRK6 is approximately 0.3ng/ml as a capture antibody.

[Protocol Download](#)

- ELISA

Gene Info — GRK6

Entrez GeneID [2870](#)

GeneBank Accession# [BC017272](#)

Protein Accession# [AAH17272](#)

Gene Name GRK6

Gene Alias FLJ32135, GPRK6

Gene Description G protein-coupled receptor kinase 6

Omim ID [600869](#)

Gene Ontology [Hyperlink](#)

Gene Summary This gene encodes a member of the guanine nucleotide-binding protein (G protein)-coupled receptor kinase subfamily of the Ser/Thr protein kinase family. The protein phosphorylates the activated forms of G protein-coupled receptors thus initiating their deactivation. Several transcript variants encoding different isoforms have been described for this gene. [provided by RefSeq]

Other Designations -

Pathway

- [Chemokine signaling pathway](#)
- [Endocytosis](#)

Disease

- [Anorexia Nervosa](#)
- [Bulimia](#)
- [Cardiovascular Diseases](#)
- [Diabetes Mellitus](#)
- [Edema](#)
- [Genetic Predisposition to Disease](#)
- [Hyperparathyroidism](#)