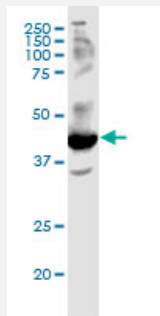


FFAR2 monoclonal antibody (M02), clone 3B3

Catalog # H00002867-M02

Size 100 ug

Applications



Western Blot (Cell lysate)

FFAR2 monoclonal antibody (M02), clone 3B3. Western Blot analysis of FFAR2 expression in HeLa.

Specification

Product Description	Mouse monoclonal antibody raised against a partial recombinant FFAR2.
Immunogen	FFAR2 (NP_005297.1, 231 a.a. ~ 330 a.a) partial recombinant protein with GST tag. MW of the GST tag alone is 26 KDa.
Sequence	FLVCFGPYNVSHLVGYHQRKSPWWRSIAVVFSSLNASLDPLLFFYSSSVVRRAFGRGLQVLRNQ GSSLLGRRGKDTAEGTNEDRGVGQGEEMPSSDFTTE
Host	Mouse
Reactivity	Human
Interspecies Antigen Sequence	Mouse (72); Rat (75)
Isotype	IgG2a Kappa
Quality Control Testing	Antibody Reactive Against Recombinant Protein.
Storage Buffer	In 1x PBS, pH 7.4
Storage Instruction	Store at -20°C or lower. Aliquot to avoid repeated freezing and thawing.

Applications

- Western Blot (Cell lysate)

FFAR2 monoclonal antibody (M02), clone 3B3. Western Blot analysis of FFAR2 expression in HeLa.

[Protocol Download](#)

- ELISA

Gene Info — FFAR2

Entrez GeneID	2867
---------------	----------------------

GeneBank Accession#	NM_005306.1
---------------------	-----------------------------

Protein Accession#	NP_005297.1
--------------------	-----------------------------

Gene Name	FFAR2
-----------	-------

Gene Alias	FFA2R, GPR43
------------	--------------

Gene Description	free fatty acid receptor 2
------------------	----------------------------

Omim ID	603823
---------	------------------------

Gene Ontology	Hyperlink
---------------	---------------------------

Gene Summary	This gene encodes a member of the GP40 family of G protein-coupled receptors that are clustered together on chromosome 19. The encoded protein is a receptor for short chain free fatty acids and may be involved in the inflammatory response and in regulating lipid plasma levels. [provided by RefSeq]
--------------	--

Other Designations	G protein-coupled receptor 43 free fatty acid activated receptor 2
--------------------	--