

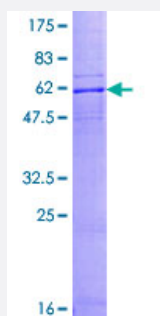
Full-Length

CCR10 (Human) Recombinant Protein (P01)

Catalog # H00002826-P01

Size 25 ug, 10 ug

Applications



Specification

Product Description

Human CCR10 full-length ORF (AAH98132.1, 1 a.a. - 362 a.a.) recombinant protein with GST-tag at N-terminal.

Sequence

MGTEATEQVSWGHYSGDEEDAYS AEPLPELCYKADVQAFSRAFQPSVSLTVAALGLAGNGLVL
ATHLAARRAARSPTSAHLLQLALADLLLALTLPFAAAGALQGWSLGSATCRTISGLYSASFHAGFL
FLACISADRYVAIARALPAGPRPSTPGRAHLVSVIVWLLSLLLALPALLFSQDGQREGQRRCLIFP
EGLTQTVKGASAVAQVALGFALPLGVMVACYALLGRTLLAARGPERRRALRVVVALVAAFVVLQ
LPYSLALLLDTADLLAARERSCPASKRKDVALLVTSGLALARCGLNPVLYAFLGLRFRQDLRLLLR
GGSCPSGPQPRRGCPRRPRLSSCSAPTETHSLSDWN

Host

Wheat Germ (in vitro)

Theoretical MW (kDa)

64.8

Preparation Method

[in vitro wheat germ expression system](#)

Purification

Glutathione Sepharose 4 Fast Flow

Quality Control Testing

12.5% SDS-PAGE Stained with Coomassie Blue.

Storage Buffer

50 mM Tris-HCl, 10 mM reduced Glutathione, pH=8.0 in the elution buffer.

Storage Instruction

Store at -80°C. Aliquot to avoid repeated freezing and thawing.

Note

Best use within three months from the date of receipt of this protein.

Applications

- Enzyme-linked Immunoabsorbent Assay
- Western Blot (Recombinant protein)
- Antibody Production
- Protein Array

Gene Info — CCR10

Entrez GeneID [2826](#)**GeneBank Accession#** [BC098132.1](#)**Protein Accession#** [AAH98132.1](#)**Gene Name** CCR10**Gene Alias** GPR2**Gene Description** chemokine (C-C motif) receptor 10**Omim ID** [600240](#)**Gene Ontology** [Hyperlink](#)**Gene Summary**

Chemokines are a group of small (approximately 8 to 14 kD), mostly basic, structurally related molecules that regulate cell trafficking of various types of leukocytes through interactions with a subset of 7-transmembrane, G protein-coupled receptors. Chemokines also play fundamental roles in the development, homeostasis, and function of the immune system, and they have effects on cells of the central nervous system as well as on endothelial cells involved in angiogenesis or angiostasis. Chemokines are divided into 2 major subfamilies, CXC and CC, based on the arrangement of the first 2 of the 4 conserved cysteine residues; the 2 cysteines are separated by a single amino acid in CXC chemokines and are adjacent in CC chemokines. CCR10 is the receptor for CCL27 (SCYA27; MIM 604833); CCR10-CCL27 interactions are involved in T cell-mediated skin inflammation (Homey et al., 2002 [PubMed 11821900]).[supplied by OMIM]

Other Designations CC chemokine receptor 10|G protein-coupled receptor 2

Pathway

- [Chemokine signaling pathway](#)
- [Cytokine-cytokine receptor interaction](#)